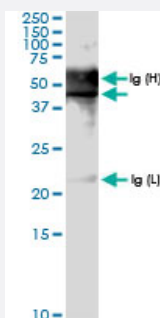


PDCD2 (Human) IP-WB Antibody Pair

Catalog # H00005134-PW1

Size 1 Set

Applications



Immunoprecipitation of PDCD2 transfected lysate using rabbit polyclonal anti-PDCD2 and Protein A Magnetic Bead ([U0007](#)), and immunoblotted with rabbit polyclonal anti-PDCD2.

Specification

Product Description	This IP-WB antibody pair set comes with one antibody for immunoprecipitation and another to detect the precipitated protein in western blot.
Reactivity	Human
Interspecies Antigen Sequence	Mouse (84%); Rat (83%)
Quality Control Testing	Immunoprecipitation-Western Blot (IP-WB) Immunoprecipitation of PDCD2 transfected lysate using rabbit polyclonal anti-PDCD2 and Protein A Magnetic Bead (U0007), and immunoblotted with rabbit polyclonal anti-PDCD2.
Supplied Product	Antibody pair set content: 1. Antibody pair for IP: rabbit polyclonal anti-PDCD2 (300 ul) 2. Antibody pair for WB: rabbit polyclonal anti-PDCD2 (50 ul)
Storage Instruction	Store reagents of the antibody pair set at -20°C or lower. Please aliquot to avoid repeated freeze thaw cycle. Reagents should be returned to -20°C storage immediately after use.

Applications

- Immunoprecipitation-Western Blot

[Protocol Download](#)

Gene Info — PDCD2

Entrez GeneID [5134](#)

Gene Name PDCD2

Gene Alias MGC12347, RP8, ZMYND7

Gene Description programmed cell death 2

Omim ID [600866](#)

Gene Ontology [Hyperlink](#)

Gene Summary This gene encodes a nuclear protein expressed in a variety of tissues. The rat homolog, Rp8, is transiently expressed in immature thymocytes and is thought to be involved in programmed cell death. Expression of the human gene has been shown to be repressed by BCL6, a transcriptional repressor required for lymph node germinal center development, suggesting that BCL6 regulates apoptosis by its effects on PDCD2. This gene is closely linked on chromosome 6 to the gene for TBP, the TATA binding protein. Two transcripts encoding different proteins have been identified. [provided by RefSeq]

Other Designations OTTHUMP00000017701|programmed cell death 2/Rp8 homolog|zinc finger protein Rp-8

Disease

- [Diabetes Mellitus](#)
- [Genetic Predisposition to Disease](#)