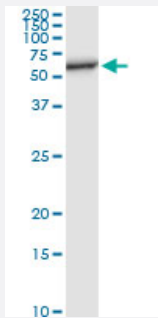


PCTK1 (Human) IP-WB Antibody Pair

Catalog # H00005127-PW1

Size 1 Set

Applications



Immunoprecipitation of PCTK1 transfected lysate using rabbit polyclonal anti-PCTK1 and Protein A Magnetic Bead ([U0007](#)), and immunoblotted with mouse purified polyclonal anti-PCTK1.

Specification

Product Description	This IP-WB antibody pair set comes with one antibody for immunoprecipitation and another to detect the precipitated protein in western blot.
Reactivity	Human
Quality Control Testing	Immunoprecipitation-Western Blot (IP-WB) Immunoprecipitation of PCTK1 transfected lysate using rabbit polyclonal anti-PCTK1 and Protein A Magnetic Bead (U0007), and immunoblotted with mouse purified polyclonal anti-PCTK1.
Supplied Product	Antibody pair set content: 1. Antibody pair for IP: rabbit polyclonal anti-PCTK1 (300 ul) 2. Antibody pair for WB: mouse purified polyclonal anti-PCTK1 (50 ug)
Storage Instruction	Store reagents of the antibody pair set at -20°C or lower. Please aliquot to avoid repeated freeze thaw cycle. Reagents should be returned to -20°C storage immediately after use.

Applications

- Immunoprecipitation-Western Blot

[Protocol Download](#)

Gene Info — PCK1

Entrez GeneID [5127](#)**Gene Name** PCK1**Gene Alias** FLJ16665, PCK1RE, PCK1RE1, PCK1GARE**Gene Description** PCK1RE protein kinase 1**Omim ID** [311550](#)**Gene Ontology** [Hyperlink](#)

Gene Summary The protein encoded by this gene belongs to the cdc2/cdkx subfamily of the ser/thr family of protein kinases. It may play a role in signal transduction cascades in terminally differentiated cells. This gene is thought to escape X inactivation. Alternative splicing results in two transcript variants encoding different isoforms. [provided by RefSeq]

Other Designations OTTHUMP00000023208|OTTHUMP00000023209|PCK1RE-motif protein kinase 1|serine/threonine-protein kinase