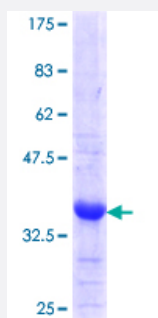


# PCSK5 (Human) Recombinant Protein (Q01)

Catalog # H00005125-Q01

Size 25 ug, 10 ug

## Applications



## Specification

<b>Product Description</b>	Human PCSK5 partial ORF ( NP_006191.2, 804 a.a. - 913 a.a.) recombinant protein with GST-tag at N-terminal.
<b>Sequence</b>	TEGYFMEDGRCVQSCSISYYFDHSSSENGYKSCCKCDISCLTCNGPGFKNCTSCPSGYLLDLGMCQMGAIKDATEESWAEGGFCMLVKKNNLCQRKVLQQLCCKTCTFQG
<b>Host</b>	Wheat Germ (in vitro)
<b>Theoretical MW (kDa)</b>	37.84
<b>Interspecies Antigen Sequence</b>	Mouse (86); Rat (92)
<b>Preparation Method</b>	<a href="#">in vitro wheat germ expression system</a>
<b>Purification</b>	Glutathione Sepharose 4 Fast Flow
<b>Quality Control Testing</b>	12.5% SDS-PAGE Stained with Coomassie Blue.
<b>Storage Buffer</b>	50 mM Tris-HCl, 10 mM reduced Glutathione, pH=8.0 in the elution buffer.
<b>Storage Instruction</b>	Store at -80°C. Aliquot to avoid repeated freezing and thawing.
<b>Note</b>	Best use within three months from the date of receipt of this protein.

## Applications

- Enzyme-linked Immunoabsorbent Assay
- Western Blot (Recombinant protein)
- Antibody Production
- Protein Array

## Gene Info — PCSK5

Entrez GeneID [5125](#)

GeneBank Accession# [NM\\_006200](#)

Protein Accession# [NP\\_006191.2](#)

Gene Name PCSK5

Gene Alias PC5, PC6, PC6A, SPC6

Gene Description proprotein convertase subtilisin/kexin type 5

Omim ID [600488](#)

Gene Ontology [Hyperlink](#)

**Gene Summary** The protein encoded by this gene belongs to the subtilisin-like proprotein convertase family. The members of this family are proprotein convertases that process latent precursor proteins into their biologically active products. This encoded protein mediates posttranslational endoproteolytic processing for several integrin alpha subunits. It is thought to process prorenin, pro-membrane type-1 matrix metalloproteinase and HIV-1 glycoprotein gp160. Two alternatively spliced transcripts are described for this gene but only one has its full length nature known. [provided by RefSeq]

**Other Designations** OTTHUMP00000021497|OTTHUMP00000063532|prohormone convertase 5|proprotein convertase PC5|protease PC6|subtilisin/kexin-like protease PC5

## Disease

- [Cardiovascular Diseases](#)
- [Diabetes Mellitus](#)

- [Edema](#)