

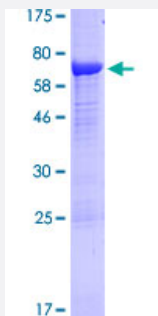
Full-Length

PCOLCE (Human) Recombinant Protein (P01)

Catalog # H00005118-P01

Size 25 ug, 10 ug

Applications



Specification

Product Description

Human PCOLCE full-length ORF (AAH00574.1, 1 a.a. - 449 a.a.) recombinant protein with GST-tag at N-terminal.

Sequence

MLPAATASLLGPLLTACALLPFAQQQTPNYTRPVFLCGGDVKGESGYVASEGFPNLYPPNKECM
TITVPEGQTVSLSFRVFDLELHPACRYDALEVFAAGSGTSGQRLGRFCGTFRPAPLVAPGNQVTLR
MTTDEGTGGRGFLWYSGRATSGTEHQFCGGRLEKAQGTLTTPNWPESDYPPGISCSWHIAPPD
QVIALTFEKFDLEPDYCRYDSVSFNGAVSDDSRRLGKFCGDAVPGISSEGNELLVQFVSDLS
VTADGFSASYKTLPRGTAKGQGPGRGTEPKVKLPPKSQPPEKTEESPSAPDAPTCPKQCR
RTGTLQSNFCASSLVVTATVKSMVREPGEGLAVTVSLIGAYKTGGLDLPSPPTGASLKFYVPCKQ
CPPMKKGVSYLLMGQVEENRGVLPPEFVVLHRPNQDQILTNLSKRKCPSQPVRAAASQD

Host

Wheat Germ (in vitro)

Theoretical MW (kDa)

74.4

Interspecies Antigen Sequence

Mouse (80); Rat (80)

Preparation Method

[in vitro wheat germ expression system](#)

Purification

Glutathione Sepharose 4 Fast Flow

Quality Control Testing

12.5% SDS-PAGE Stained with Coomassie Blue.

Storage Buffer	50 mM Tris-HCl, 10 mM reduced Glutathione, pH=8.0 in the elution buffer.
Storage Instruction	Store at -80°C. Aliquot to avoid repeated freezing and thawing.
Note	Best use within three months from the date of receipt of this protein.

Applications

- Enzyme-linked Immunoabsorbent Assay
- Western Blot (Recombinant protein)
- Antibody Production
- Protein Array

Gene Info — PCOLCE

Entrez GeneID	5118
GeneBank Accession#	BC000574.2
Protein Accession#	AAH00574.1
Gene Name	PCOLCE
Gene Alias	PCPE, PCPE1
Gene Description	procollagen C-endopeptidase enhancer
Omim ID	600270
Gene Ontology	Hyperlink
Gene Summary	Fibrillar collagen types I-III are synthesized as precursor molecules known as procollagens. These precursors contain amino- and carboxyl-terminal peptide extensions known as N- and C-propeptides, respectively, which are cleaved, upon secretion of procollagen from the cell, to yield the mature triple helical, highly structured fibrils. This gene encodes a glycoprotein which binds and drives the enzymatic cleavage of type I procollagen and heightens C-proteinase activity. [provided by RefSeq]
Other Designations	procollagen C-proteinase enhancer 1 procollagen, type 1, COOH-terminal proteinase enhancer