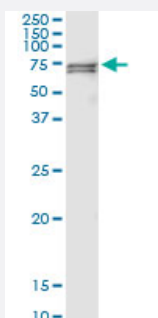


# PCK2 (Human) IP-WB Antibody Pair

Catalog # H00005106-PW1

Size 1 Set

## Applications



Immunoprecipitation of PCK2 transfected lysate using rabbit polyclonal anti-PCK2 and Protein A Magnetic Bead ([U0007](#)), and immunoblotted with mouse purified polyclonal anti-PCK2.

## Specification

### Product Description

This IP-WB antibody pair set comes with one antibody for immunoprecipitation and another to detect the precipitated protein in western blot.

### Reactivity

Human

### Quality Control Testing

Immunoprecipitation-Western Blot (IP-WB)

Immunoprecipitation of PCK2 transfected lysate using rabbit polyclonal anti-PCK2 and Protein A Magnetic Bead ([U0007](#)), and immunoblotted with mouse purified polyclonal anti-PCK2.

### Supplied Product

Antibody pair set content:

1. Antibody pair for IP: rabbit polyclonal anti-PCK2 (300 ul)
2. Antibody pair for WB: mouse purified polyclonal anti-PCK2 (50 ug)

### Storage Instruction

Store reagents of the antibody pair set at -20°C or lower. Please aliquot to avoid repeated freeze thaw cycle. Reagents should be returned to -20°C storage immediately after use.

## Applications

- Immunoprecipitation-Western Blot

[Protocol Download](#)

## Gene Info — PCK2

Entrez GeneID [5106](#)

Gene Name PCK2

Gene Alias PEPCK, PEPCK-M, PEPCK2

Gene Description phosphoenolpyruvate carboxykinase 2 (mitochondrial)

Omim ID [261650](#)

Gene Ontology [Hyperlink](#)

**Gene Summary** This gene encodes a member of the phosphoenolpyruvate carboxykinase (GTP) family. The protein is a mitochondrial enzyme that catalyzes the conversion of oxaloacetate to phosphoenolpyruvate in the presence of GTP. A cytosolic form encoded by a different gene has also been characterized and is the key enzyme of gluconeogenesis in the liver. The encoded protein may serve a similar function, although it is constitutively expressed and not modulated by hormones such as glucagon and insulin that regulate the cytosolic form. Alternatively spliced transcript variants have been described. [provided by RefSeq]

**Other Designations** OTTHUMP00000164700|PEP carboxykinase|mitochondrial phosphoenolpyruvate carboxykinase 2|phosphoenolpyruvate carboxylase|phosphopyruvate carboxylase

## Pathway

- [Adipocytokine signaling pathway](#)
- [Citrate cycle \(TCA cycle\)](#)
- [Glycolysis / Gluconeogenesis](#)
- [Insulin signaling pathway](#)
- [Metabolic pathways](#)
- [PPAR signaling pathway](#)
- [Pyruvate metabolism](#)

## Disease

- [Diabetes Mellitus](#)