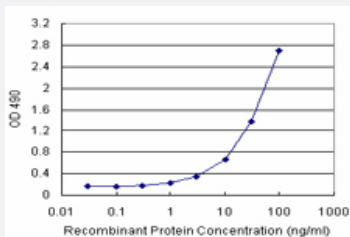


# PCK2 (Human) Matched Antibody Pair

Catalog # H00005106-AP21      Size 1 Set

## Applications



Sandwich ELISA detection sensitivity ranging from 1 ng/ml to 100 ng/ml.

## Specification

<b>Product Description</b>	This antibody pair set comes with a matched antibody pair to detect and quantify the protein level of human PCK2.
<b>Reactivity</b>	Human
<b>Quality Control Testing</b>	Standard curve using recombinant protein ( H00005106-P01 ) as an analyte. Sandwich ELISA detection sensitivity ranging from 1 ng/ml to 100 ng/ml.
<b>Supplied Product</b>	Antibody pair set content: 1. Capture antibody: rabbit MaxPab® affinity purified polyclonal anti-PCK2 (100 ug) 2. Detection antibody: mouse purified polyclonal anti-PCK2 (20 ug) *Reagents are sufficient for at least 1-2 x 96 well plates using recommended protocols.
<b>Storage Instruction</b>	Store reagents of the antibody pair set at -20°C or lower. Please aliquot to avoid repeated freeze thaw cycle. Reagents should be returned to -20°C storage immediately after use.

## Applications

- ELISA Pair (Recombinant protein)

[Protocol Download](#)

## Gene Info — PCK2

Entrez GeneID [5106](#)

Gene Name PCK2

Gene Alias PEPCK, PEPCK-M, PEPCK2

Gene Description phosphoenolpyruvate carboxykinase 2 (mitochondrial)

Omim ID [261650](#)

Gene Ontology [Hyperlink](#)

**Gene Summary** This gene encodes a member of the phosphoenolpyruvate carboxykinase (GTP) family. The protein is a mitochondrial enzyme that catalyzes the conversion of oxaloacetate to phosphoenolpyruvate in the presence of GTP. A cytosolic form encoded by a different gene has also been characterized and is the key enzyme of gluconeogenesis in the liver. The encoded protein may serve a similar function, although it is constitutively expressed and not modulated by hormones such as glucagon and insulin that regulate the cytosolic form. Alternatively spliced transcript variants have been described. [provided by RefSeq]

**Other Designations** OTTHUMP00000164700|PEP carboxykinase|mitochondrial phosphoenolpyruvate carboxykinase 2|phosphoenolpyruvate carboxylase|phosphopyruvate carboxylase

## Pathway

- [Adipocytokine signaling pathway](#)
- [Citrate cycle \(TCA cycle\)](#)
- [Glycolysis / Gluconeogenesis](#)
- [Insulin signaling pathway](#)
- [Metabolic pathways](#)
- [PPAR signaling pathway](#)
- [Pyruvate metabolism](#)

## Disease

- [Diabetes Mellitus](#)