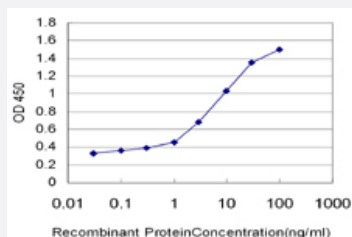


PCDHGC3 monoclonal antibody (M02), clone 3A1

Catalog # H00005098-M02

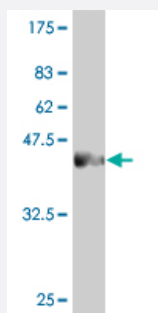
Size 100 ug

Applications



Sandwich ELISA (Recombinant protein)

Detection limit for recombinant GST tagged PCDHGC3 is approximately 0.1ng/ml as a capture antibody.



Western Blot detection against Immunogen (37.62 KDa) .

Specification

Product Description	Mouse monoclonal antibody raised against a partial recombinant PCDHGC3.
Immunogen	PCDHGC3 (NP_002579, 71 a.a. ~ 178 a.a) partial recombinant protein with GST tag. MW of the GST tag alone is 26 KDa.
Sequence	GASRRFFEVDNRETGEMFVNDRLDREELCGTLPSCVTLELVVENPLELFSVEVVQDINDNNPAFPTQEMKLEISEAVAPGTRFPLESAHDPDVGSNSLQTYELSRNE
Host	Mouse
Reactivity	Human

Interspecies Antigen Sequence	Mouse (94); Rat (94)
Isotype	IgG2a Kappa
Quality Control Testing	Antibody Reactive Against Recombinant Protein. Western Blot detection against Immunogen (37.62 KDa) .
Storage Buffer	In 1x PBS, pH 7.4
Storage Instruction	Store at -20°C or lower. Aliquot to avoid repeated freezing and thawing.

Applications

- Western Blot (Recombinant protein)

[Protocol Download](#)

- Sandwich ELISA (Recombinant protein)

Detection limit for recombinant GST tagged PCDHGC3 is approximately 0.1ng/ml as a capture antibody.

[Protocol Download](#)

- ELISA

Gene Info — PCDHGC3

Entrez GeneID	5098
GeneBank Accession#	NM_002588
Protein Accession#	NP_002579
Gene Name	PCDHGC3
Gene Alias	PC43, PCDH-GAMMA-C3, PCDH2
Gene Description	protocadherin gamma subfamily C, 3
Omim ID	603627
Gene Ontology	Hyperlink

Gene Summary

This gene is a member of the protocadherin gamma gene cluster, one of three related clusters tandemly linked on chromosome five. These gene clusters have an immunoglobulin-like organization, suggesting that a novel mechanism may be involved in their regulation and expression. The gamma gene cluster includes 22 genes divided into 3 subfamilies. Subfamily A contains 12 genes, subfamily B contains 7 genes and 2 pseudogenes, and the more distantly related subfamily C contains 3 genes. The tandem array of 22 large, variable region exons are followed by a constant region, containing 3 exons shared by all genes in the cluster. Each variable region exon encodes the extracellular region, which includes 6 cadherin ectodomains and a transmembrane region. The constant region exons encode the common cytoplasmic region. These neural cadherin-like cell adhesion proteins most likely play a critical role in the establishment and function of specific cell-cell connections in the brain. Alternative splicing has been described for the gamma cluster genes. [provided by RefSeq]

Other Designations

cadherin-like 2|protocadherin 2|protocadherin 43