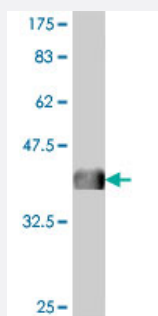


# PCDHGC3 polyclonal antibody (A01)

Catalog # H00005098-A01

Size 50 uL

## Applications



Western Blot detection against Immunogen (37.99 KDa) .

## Specification

<b>Product Description</b>	Mouse polyclonal antibody raised against a partial recombinant PCDHGC3.
<b>Immunogen</b>	PCDHGC3 (NP_002579, 71 a.a. ~ 178 a.a) partial recombinant protein with GST tag.
<b>Sequence</b>	GASRRFFEVNRETGEMFVNDRLDREELCGTLPSCVTLELVVENPLELFSVEVVIQDINDNNPAF PTQEMKLEISEAVAPGTRFPLESAHDPDVGNSLQTYELSRNE
<b>Host</b>	Mouse
<b>Reactivity</b>	Human
<b>Interspecies Antigen Sequence</b>	Mouse (94); Rat (94)
<b>Quality Control Testing</b>	Antibody Reactive Against Recombinant Protein. Western Blot detection against Immunogen (37.99 KDa) .
<b>Storage Buffer</b>	50 % glycerol
<b>Storage Instruction</b>	Store at -20°C or lower. Aliquot to avoid repeated freezing and thawing.

## Applications

- Western Blot (Recombinant protein)

[Protocol Download](#)

- ELISA

## Gene Info — PCDHGC3

Entrez GeneID [5098](#)

GeneBank Accession# [NM\\_002588](#)

Protein Accession# [NP\\_002579](#)

Gene Name PCDHGC3

Gene Alias PC43, PCDH-GAMMA-C3, PCDH2

Gene Description protocadherin gamma subfamily C, 3

Omim ID [603627](#)

Gene Ontology [Hyperlink](#)

### Gene Summary

This gene is a member of the protocadherin gamma gene cluster, one of three related clusters tandemly linked on chromosome five. These gene clusters have an immunoglobulin-like organization, suggesting that a novel mechanism may be involved in their regulation and expression. The gamma gene cluster includes 22 genes divided into 3 subfamilies. Subfamily A contains 12 genes, subfamily B contains 7 genes and 2 pseudogenes, and the more distantly related subfamily C contains 3 genes. The tandem array of 22 large, variable region exons are followed by a constant region, containing 3 exons shared by all genes in the cluster. Each variable region exon encodes the extracellular region, which includes 6 cadherin ectodomains and a transmembrane region. The constant region exons encode the common cytoplasmic region. These neural cadherin-like cell adhesion proteins most likely play a critical role in the establishment and function of specific cell-cell connections in the brain. Alternative splicing has been described for the gamma cluster genes. [provided by RefSeq]

Other Designations cadherin-like 2|protocadherin 2|protocadherin 43