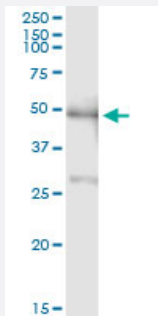


# PBX2 (Human) IP-WB Antibody Pair

Catalog # H00005089-PW1

Size 1 Set

## Applications



Immunoprecipitation of PBX2 transfected lysate using rabbit polyclonal anti-PBX2 and Protein A Magnetic Bead ([U0007](#)), and immunoblotted with mouse monoclonal anti-PBX2.

## Specification

<b>Product Description</b>	This IP-WB antibody pair set comes with one antibody for immunoprecipitation and another to detect the precipitated protein in western blot.
<b>Reactivity</b>	Human
<b>Interspecies Antigen Sequence</b>	Mouse (97%); Rat (98%)
<b>Quality Control Testing</b>	Immunoprecipitation-Western Blot (IP-WB) Immunoprecipitation of PBX2 transfected lysate using rabbit polyclonal anti-PBX2 and Protein A Magnetic Bead ( <a href="#">U0007</a> ), and immunoblotted with mouse monoclonal anti-PBX2.
<b>Supplied Product</b>	Antibody pair set content: 1. Antibody pair for IP: rabbit polyclonal anti-PBX2 (300 ul) 2. Antibody pair for WB: mouse monoclonal anti-PBX2 (50 ug)
<b>Storage Instruction</b>	Store reagents of the antibody pair set at -20°C or lower. Please aliquot to avoid repeated freeze thaw cycle. Reagents should be returned to -20°C storage immediately after use.

## Applications

- Immunoprecipitation-Western Blot

[Protocol Download](#)

## Gene Info — PBX2

Entrez GeneID	<a href="#">5089</a>
Gene Name	PBX2
Gene Alias	G17, HOX12, PBX2MHC
Gene Description	pre-B-cell leukemia homeobox 2
Omim ID	<a href="#">176311</a>
Gene Ontology	<a href="#">Hyperlink</a>
Gene Summary	This gene encodes a ubiquitously expressed member of the TALE/PBX homeobox family. It was identified by its similarity to a homeobox gene which is involved in t(1;19) translocation in acute pre-B-cell leukemias. This protein is a transcriptional activator which binds to the TLX1 promoter. The gene is located within the major histocompatibility complex (MHC) on chromosome 6. [provided by RefSeq]
Other Designations	OTTHUMP00000029151 homeobox 12 pre-B-cell leukemia transcription factor 2

## Disease

- [Abortion](#)
- [Cardiovascular Diseases](#)
- [Colitis](#)
- [Diabetes Mellitus](#)
- [Edema](#)
- [Genetic Predisposition to Disease](#)
- [Lupus Erythematosus](#)