

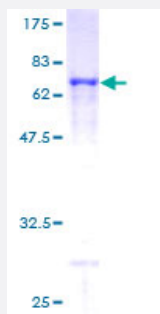
Full-Length

PDCL (Human) Recombinant Protein (P01)

Catalog # H00005082-P01

Size 25 ug, 10 ug

Applications



Specification

Product Description

Human PDCL full-length ORF (AAH17227, 1 a.a. - 301 a.a.) recombinant protein with GST-tag at N-terminal.

Sequence

MTTLDDKLLGEKLQYYSSSEDESDHEDKDRGRCAPASSVPAEAEELAGEGISVNTGPKGVIN
DWRRFKQLETEQREEQCREMERLIKLSMTCRSHLDEEEQQKQKDLQEKGKMTLKEFAIMN
EDQDDEEFLLQYRKQRMEEMRQQLHKGPQFKQVFEISSGEGFLDMIDKEQKSMIMVHIYEDGIPG
TEAMNGCMICLAAEYPAVKFCKVKSSVIGASSQFTRNALPALLYKGGELIGNFVRVTDQLGDDFF
AVDLEAFLQEFGLLPEKEVLVLTSVRNSATCHSESDSLEID

Host

Wheat Germ (in vitro)

Theoretical MW (kDa)

58.85

Interspecies Antigen Sequence

Mouse (92); Rat (92)

Preparation Method

[in vitro wheat germ expression system](#)

Purification

Glutathione Sepharose 4 Fast Flow

Quality Control Testing

12.5% SDS-PAGE Stained with Coomassie Blue.

Storage Buffer

50 mM Tris-HCl, 10 mM reduced Glutathione, pH=8.0 in the elution buffer.

Storage Instruction

Store at -80°C. Aliquot to avoid repeated freezing and thawing.

Note

Best use within three months from the date of receipt of this protein.

Applications

- Enzyme-linked Immunoabsorbent Assay
- Western Blot (Recombinant protein)
- Antibody Production
- Protein Array

Gene Info — PDCL

Entrez GeneID[5082](#)**GeneBank Accession#**[BC017227](#)**Protein Accession#**[AAH17227](#)**Gene Name**

PDCL

Gene Alias

DKFZp564M1863, PhLP

Gene Description

phosducin-like

Omim ID[604421](#)**Gene Ontology**[Hyperlink](#)**Gene Summary**

Phosducin-like protein is a putative modulator of heterotrimeric G proteins. The protein shares extensive amino acid sequence homology with phosducin, a phosphoprotein expressed in retina and pineal gland. Both phosducin-like protein and phosphoducin have been shown to regulate G-proteins in signaling by binding to the beta-gamma subunits of G proteins. [provided by RefSeq]

Other Designations

phosducin-like protein