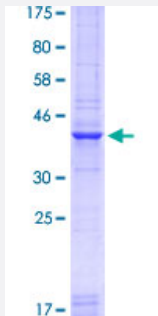


PAX7 (Human) Recombinant Protein (Q01)

Catalog # H00005081-Q01

Size 25 ug, 10 ug

Applications



Specification

Product Description	Human PAX7 partial ORF (NP_002575.1, 411 a.a. - 520 a.a.) recombinant protein with GST-tag at N-terminal.
Sequence	GGLDSATSISASCSQRADSIKPGDSLPTSQAYCPPTYSTTGYSVDPVAGYQYGGYQQSECLVPW ASPVPIPSPTPRASCLFMESYKVVSGWGMSISQMEKLKSSQMEQFT
Host	Wheat Germ (in vitro)
Theoretical MW (kDa)	37.84
Interspecies Antigen Sequence	Mouse (93); Rat (93)
Preparation Method	in vitro wheat germ expression system
Purification	Glutathione Sepharose 4 Fast Flow
Quality Control Testing	12.5% SDS-PAGE Stained with Coomassie Blue.
Storage Buffer	50 mM Tris-HCl, 10 mM reduced Glutathione, pH=8.0 in the elution buffer.
Storage Instruction	Store at -80°C. Aliquot to avoid repeated freezing and thawing.
Note	Best use within three months from the date of receipt of this protein.

Applications

- Enzyme-linked Immunoabsorbent Assay
- Western Blot (Recombinant protein)
- Antibody Production
- Protein Array

Gene Info — PAX7

Entrez GeneID [5081](#)

GeneBank Accession# [NM_002584](#)

Protein Accession# [NP_002575.1](#)

Gene Name PAX7

Gene Alias HUP1, PAX7B

Gene Description paired box 7

Omim ID [167410](#) [268220](#)

Gene Ontology [Hyperlink](#)

Gene Summary This gene is a member of the paired box (PAX) family of transcription factors. Members of this gene family typically contain a paired box domain, an octapeptide, and a paired-type homeodomain. These genes play critical roles during fetal development and cancer growth. The specific function of the paired box 7 gene is unknown but speculated to involve tumor suppression since fusion of this gene with a forkhead domain family member has been associated with alveolar rhabdomyosarcoma. Three transcript variants encoding different isoforms have been found for this gene. [provided by RefSeq]

Other Designations OTTHUMP00000002534|PAX7 transcriptional factor|paired box gene 7|paired box homeotic gene 7|paired domain gene 7

Disease

- [Cleft Lip](#)
- [Cleft Palate](#)

- [Genetic Predisposition to Disease](#)
- [Narcolepsy](#)