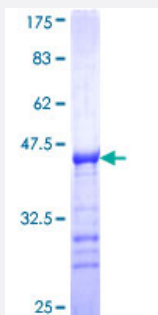


PALM (Human) Recombinant Protein (Q01)

Catalog # H00005064-Q01

Size 25 ug, 10 ug

Applications



Specification

Product Description	Human PALM partial ORF (NP_005839, 176 a.a. - 284 a.a.) recombinant protein with GST-tag at N-terminal.
Sequence	VEKDKVTGETRVLSSTLLPRQPLPLGKVEDETKVVHAVDGTAEAGIHPLSSSEVDELIHKADE VTLSEAGSTAGAAETRGAVEGAARTTPSRREITGVQAQPGAT
Host	Wheat Germ (in vitro)
Theoretical MW (kDa)	37.73
Interspecies Antigen Sequence	Mouse (87); Rat (86)
Preparation Method	in vitro wheat germ expression system
Purification	Glutathione Sepharose 4 Fast Flow
Quality Control Testing	12.5% SDS-PAGE Stained with Coomassie Blue.
Storage Buffer	50 mM Tris-HCl, 10 mM reduced Glutathione, pH=8.0 in the elution buffer.
Storage Instruction	Store at -80°C. Aliquot to avoid repeated freezing and thawing.
Note	Best use within three months from the date of receipt of this protein.

Applications

- Enzyme-linked Immunoabsorbent Assay
- Western Blot (Recombinant protein)
- Antibody Production
- Protein Array

Gene Info — PALM

Entrez GeneID [5064](#)

GeneBank Accession# [NM_002579](#)

Protein Accession# [NP_005839](#)

Gene Name PALM

Gene Alias KIAA0270

Gene Description paralemmin

Omim ID [608134](#)

Gene Ontology [Hyperlink](#)

Gene Summary This gene encodes a member of the paralemmin protein family. The product of this gene is a prenylated and palmitoylated phosphoprotein that associates with the cytoplasmic face of plasma membranes and is implicated in plasma membrane dynamics in neurons and other cell types. Several alternatively spliced transcript variants have been identified, but the full-length nature of only two transcript variants has been determined. [provided by RefSeq]

Other Designations -