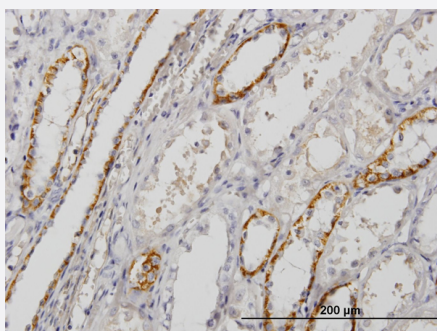


PALM monoclonal antibody (M09), clone 7C5

Catalog # H00005064-M09

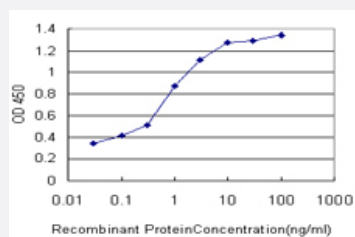
Size 100 ug

Applications



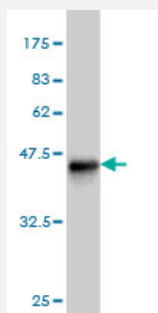
Immunohistochemistry (Formalin/PFA-fixed paraffin-embedded sections)

Immunoperoxidase of monoclonal antibody to PALM on formalin-fixed paraffin-embedded human kidney. [antibody concentration 1.5 ug/ml]



Sandwich ELISA (Recombinant protein)

Detection limit for recombinant GST tagged PALM is approximately 0.03ng/ml as a capture antibody.



Western Blot detection against Immunogen (37.73 KDa) .

Specification

Product Description

Mouse monoclonal antibody raised against a partial recombinant PALM.

Immunogen	PALM (NP_005839, 176 a.a. ~ 284 a.a) partial recombinant protein with GST tag. MW of the GST tag alone is 26 KDa.
Sequence	VEKDKVTGETRVLSSTTLLPRQPLPLGKVEDETKVVHAVDGTAEAGIHPLSSSEVDELIHKADEVTLSEAGSTAGAAETRGAVEGAARTTPSRREITGVQAQPGAT
Host	Mouse
Reactivity	Human
Interspecies Antigen Sequence	Mouse (87); Rat (86)
Isotype	IgG3 Kappa
Quality Control Testing	Antibody Reactive Against Recombinant Protein. Western Blot detection against Immunogen (37.73 KDa) .
Storage Buffer	In 1x PBS, pH 7.4
Storage Instruction	Store at -20°C or lower. Aliquot to avoid repeated freezing and thawing.

Applications

- Western Blot (Recombinant protein)

[Protocol Download](#)

- Immunohistochemistry (Formalin/PFA-fixed paraffin-embedded sections)

Immunoperoxidase of monoclonal antibody to PALM on formalin-fixed paraffin-embedded human kidney. [antibody concentration 1.5 ug/ml]

[Protocol Download](#)

- Sandwich ELISA (Recombinant protein)

Detection limit for recombinant GST tagged PALM is approximately 0.03ng/ml as a capture antibody.

[Protocol Download](#)

- ELISA

Gene Info — PALM

Entrez GeneID

[5064](#)

GeneBank Accession#	NM_002579
Protein Accession#	NP_005839
Gene Name	PALM
Gene Alias	KIAA0270
Gene Description	paralemmin
Omim ID	608134
Gene Ontology	Hyperlink
Gene Summary	<p>This gene encodes a member of the paralemmin protein family. The product of this gene is a prenylated and palmitoylated phosphoprotein that associates with the cytoplasmic face of plasma membranes and is implicated in plasma membrane dynamics in neurons and other cell types. Several alternatively spliced transcript variants have been identified, but the full-length nature of only two transcript variants has been determined. [provided by RefSeq]</p>
Other Designations	-