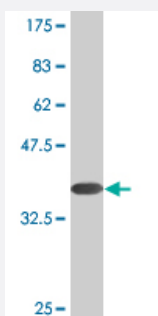


PALM monoclonal antibody (M06), clone 4E1

Catalog # H00005064-M06

Size 100 ug

Applications



Western Blot detection against Immunogen (37.73 KDa) .

Specification

| | |
|--------------------------------------|---|
| Product Description | Mouse monoclonal antibody raised against a partial recombinant PALM. |
| Immunogen | PALM (NP_005839, 176 a.a. ~ 284 a.a) partial recombinant protein with GST tag. MW of the GST tag alone is 26 KDa. |
| Sequence | VEKDKVTGETRVLSTLLPRQPLPLGIKVYEDETKVVHAVDGTAEAGHPLSSSEVDELIHKADEVTLSEAGSTAGAAETRGAVEGAARTTPSRREITGVQAQPGEAT |
| Host | Mouse |
| Reactivity | Human |
| Interspecies Antigen Sequence | Mouse (87); Rat (86) |
| Isotype | IgG3 Kappa |
| Quality Control Testing | Antibody Reactive Against Recombinant Protein. Western Blot detection against Immunogen (37.73 KDa) . |
| Storage Buffer | In 1x PBS, pH 7.4 |
| Storage Instruction | Store at -20°C or lower. Aliquot to avoid repeated freezing and thawing. |

Applications

- Western Blot (Recombinant protein)

[Protocol Download](#)

- ELISA

Gene Info — PALM

| | |
|---------------|----------------------|
| Entrez GeneID | 5064 |
|---------------|----------------------|

| | |
|---------------------|---------------------------|
| GeneBank Accession# | NM_002579 |
|---------------------|---------------------------|

| | |
|--------------------|---------------------------|
| Protein Accession# | NP_005839 |
|--------------------|---------------------------|

| | |
|-----------|------|
| Gene Name | PALM |
|-----------|------|

| | |
|------------|----------|
| Gene Alias | KIAA0270 |
|------------|----------|

| | |
|------------------|------------|
| Gene Description | paralemmin |
|------------------|------------|

| | |
|---------|------------------------|
| Omim ID | 608134 |
|---------|------------------------|

| | |
|---------------|---------------------------|
| Gene Ontology | Hyperlink |
|---------------|---------------------------|

| | |
|--------------|--|
| Gene Summary | This gene encodes a member of the paralemmin protein family. The product of this gene is a prenylated and palmitoylated phosphoprotein that associates with the cytoplasmic face of plasma membranes and is implicated in plasma membrane dynamics in neurons and other cell types. Several alternatively spliced transcript variants have been identified, but the full-length nature of only two transcript variants has been determined. [provided by RefSeq] |
|--------------|--|

| | |
|--------------------|---|
| Other Designations | - |
|--------------------|---|