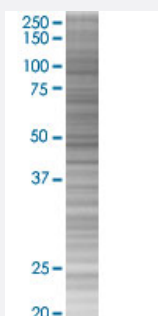


PAEP 293T Cell Transient Overexpression Lysate(Denatured)

Catalog # H00005047-T02

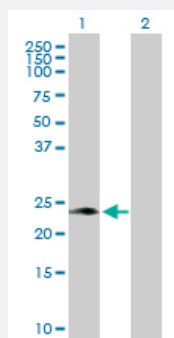
Size 100 uL

Applications



SDS-PAGE Gel

PAEP transfected lysate.



Western Blot

Lane 1: PAEP transfected lysate (20.60 KDa)

Lane 2: Non-transfected lysate.

Specification

Transfected Cell Line 293T

Plasmid pCMV-PAEP full-length

Host Human

Theoretical MW (kDa) 20.6

Quality Control Testing Transient overexpression cell lysate was tested with Anti-PAEP antibody ([H00005047-D01P](#)) by Western Blots.
 SDS-PAGE Gel
 PAEP transfected lysate.
 Western Blot
 Lane 1: PAEP transfected lysate (20.60 KDa)
 Lane 2: Non-transfected lysate.

Storage Buffer	1X Sample Buffer (50 mM Tris-HCl, 2% SDS, 10% glycerol, 300 mM 2-mercaptoethanol, 0.01% Bromophenol blue)
Storage Instruction	Store at -80°C. Aliquot to avoid repeated freezing and thawing.

Applications

- Western Blot

Gene Info — PAEP

Entrez GeneID	5047
GeneBank Accession#	NM_002571.2
Protein Accession#	NP_002562.2
Gene Name	PAEP
Gene Alias	GD, GdA, GdF, GdS, MGC138509, MGC142288, PAEG, PEP, PP14
Gene Description	progesterone-associated endometrial protein
Omim ID	173310
Gene Ontology	Hyperlink

Gene Summary	<p>This gene is a member of the kernel lipocalin superfamily whose members share relatively low sequence similarity but have highly conserved exon/intron structure and three-dimensional protein folding. Most lipocalins are clustered on the long arm of chromosome 9. The encoded glycoprotein has been previously referred to as pregnancy-associated endometrial alpha-2-globulin, placental protein 14, and glycodelin, but has been officially named progesterone-associated endometrial protein. Three distinct forms, with identical protein backbones but different glycosylation profiles, are found in amniotic fluid, follicular fluid and seminal plasma of the reproductive system. These glycoproteins have distinct and essential roles in regulating a uterine environment suitable for pregnancy and in the timing and occurrence of the appropriate sequence of events in the fertilization process. A number of alternatively spliced transcript variants have been observed at this locus, but the full-length nature of only two, each encoding the same protein, has been determined. [provided by RefSeq]</p>
--------------	---

Other Designations	OTTHUMP00000022548 OTTHUMP00000022549 OTTHUMP00000022550 PP14 protein (placental protein 14) alpha uterine protein glycodelin glycodelin-A glycodelin-F glycodelin-S pregnancy-associated endometrial alpha-2-globulin progesterone-associated endometrial prot
--------------------	---