

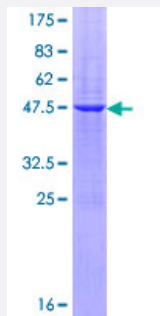
Full-Length

PAEP (Human) Recombinant Protein (P01)

Catalog # H00005047-P01

Size 25 ug, 10 ug

Applications



Specification

Product Description	Human PAEP full-length ORF (NP_002562.2, 1 a.a. - 180 a.a.) recombinant protein with GST-tag at N-terminal.
Sequence	MLCLLLTLGVALVCGVPAMDIPQTKQDLELPKLAGTWHSMAMATNNISLMATLKAPLRVHITSLLP TPEDNLEIVLHRWENNSCVEKKVLGEKTENPKKFKINYTVANEATLLD TDYDNFLFLCLQD TTTPIQ SMMCQYLARVLVEDDEIMQGFIRAFRPLPRHLWYLLDLKQMEEPCRF
Host	Wheat Germ (in vitro)
Theoretical MW (kDa)	47
Preparation Method	in vitro wheat germ expression system
Purification	Glutathione Sepharose 4 Fast Flow
Quality Control Testing	12.5% SDS-PAGE Stained with Coomassie Blue.
Storage Buffer	50 mM Tris-HCl, 10 mM reduced Glutathione, pH=8.0 in the elution buffer.
Storage Instruction	Store at -80°C. Aliquot to avoid repeated freezing and thawing.
Note	Best use within three months from the date of receipt of this protein.

Applications

- Enzyme-linked Immunoabsorbent Assay
- Western Blot (Recombinant protein)
- Antibody Production
- Protein Array

Gene Info — PAEP

Entrez GeneID [5047](#)

GeneBank Accession# [NM_002571.2](#)

Protein Accession# [NP_002562.2](#)

Gene Name PAEP

Gene Alias GD, GdA, GdF, GdS, MGC138509, MGC142288, PAEG, PEP, PP14

Gene Description progesterone-associated endometrial protein

Omim ID [173310](#)

Gene Ontology [Hyperlink](#)

Gene Summary

This gene is a member of the kernel lipocalin superfamily whose members share relatively low sequence similarity but have highly conserved exon/intron structure and three-dimensional protein folding. Most lipocalins are clustered on the long arm of chromosome 9. The encoded glycoprotein has been previously referred to as pregnancy-associated endometrial alpha-2-globulin, placental protein 14, and glycodein, but has been officially named progesterone-associated endometrial protein. Three distinct forms, with identical protein backbones but different glycosylation profiles, are found in amniotic fluid, follicular fluid and seminal plasma of the reproductive system. These glycoproteins have distinct and essential roles in regulating a uterine environment suitable for pregnancy and in the timing and occurrence of the appropriate sequence of events in the fertilization process. A number of alternatively spliced transcript variants have been observed at this locus, but the full-length nature of only two, each encoding the same protein, has been determined. [provided by RefSeq]

Other Designations OTTHUMP00000022548|OTTHUMP00000022549|OTTHUMP00000022550|PP14 protein (placental protein 14)|alpha uterine protein|glycodein|glycodein-A|glycodein-F|glycodein-S|pregnancy-associated endometrial alpha-2-globulin|progesterone-associated endometrial prot