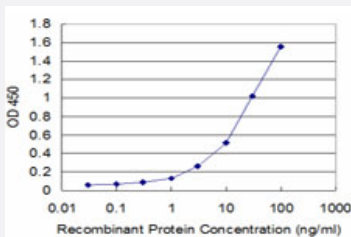


# PAEP monoclonal antibody (M02), clone 4E4

Catalog # H00005047-M02

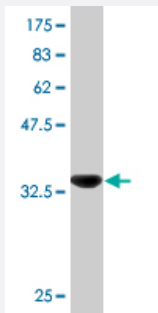
Size 100 ug

## Applications



### Sandwich ELISA (Recombinant protein)

Detection limit for recombinant GST tagged PAEP is approximately 0.3ng/ml as a capture antibody.



Western Blot detection against Immunogen (37.84 KDa) .

## Specification

### Product Description

Mouse monoclonal antibody raised against a partial recombinant PAEP.

### Immunogen

PAEP (NP\_002562, 53 a.a. ~ 162 a.a) partial recombinant protein with GST tag. MW of the GST tag alone is 26 KDa.

### Sequence

NLEIVLHRWENNNSCVEKKVLGEKTENPKKFKINYTVANEATLLD TDYDNFLFLCLQD TTTPIQSMM  
CQYLARVLVEDDEIMQGFIRAFRPLPRHLWYLLDLKQMEEPCR F

### Host

Mouse

### Reactivity

Human

### Isotype

IgG1 Lambda

**Quality Control Testing**

Antibody Reactive Against Recombinant Protein.  
Western Blot detection against Immunogen (37.84 KDa) .

**Storage Buffer**

In 1x PBS, pH 7.4

**Storage Instruction**

Store at -20°C or lower. Aliquot to avoid repeated freezing and thawing.

## Applications

- Western Blot (Recombinant protein)

[Protocol Download](#)

- Sandwich ELISA (Recombinant protein)

Detection limit for recombinant GST tagged PAEP is approximately 0.3ng/ml as a capture antibody.

[Protocol Download](#)

- ELISA

## Gene Info — PAEP

**Entrez GeneID**

[5047](#)

**GeneBank Accession#**

[NM\\_002571](#)

**Protein Accession#**

[NP\\_002562](#)

**Gene Name**

PAEP

**Gene Alias**

GD, GdA, GdF, GdS, MGC138509, MGC142288, PAEG, PEP, PP14

**Gene Description**

progesterone-associated endometrial protein

**Omim ID**

[173310](#)

**Gene Ontology**

[Hyperlink](#)

**Gene Summary**

This gene is a member of the kernel lipocalin superfamily whose members share relatively low sequence similarity but have highly conserved exon/intron structure and three-dimensional protein folding. Most lipocalins are clustered on the long arm of chromosome 9. The encoded glycoprotein has been previously referred to as pregnancy-associated endometrial alpha-2-globulin, placental protein 14, and glycodelin, but has been officially named progesterone-associated endometrial protein. Three distinct forms, with identical protein backbones but different glycosylation profiles, are found in amniotic fluid, follicular fluid and seminal plasma of the reproductive system. These glycoproteins have distinct and essential roles in regulating a uterine environment suitable for pregnancy and in the timing and occurrence of the appropriate sequence of events in the fertilization process. A number of alternatively spliced transcript variants have been observed at this locus, but the full-length nature of only two, each encoding the same protein, has been determined. [provided by RefSeq]

**Other Designations**

OTTHUMP00000022548|OTTHUMP00000022549|OTTHUMP00000022550|PP14 protein (placental protein 14)|alpha uterine protein|glycodelin|glycodelin-A|glycodelin-F|glycodelin-S|pregnancy-associated endometrial alpha-2-globulin|progesterone-associated endometrial prot