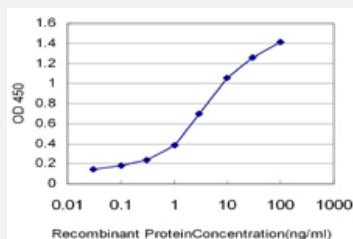


PCSK6 monoclonal antibody (M01), clone 2D6

Catalog # H00005046-M01

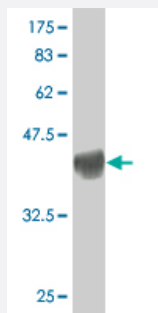
Size 100 ug

Applications



Sandwich ELISA (Recombinant protein)

Detection limit for recombinant GST tagged PCSK6 is approximately 0.1ng/ml as a capture antibody.



Western Blot detection against Immunogen (37.84 KDa) .

Specification

Product Description

Mouse monoclonal antibody raised against a partial recombinant PCSK6.

Immunogen

PCSK6 (NP_002561, 860 a.a. ~ 969 a.a) partial recombinant protein with GST tag. MW of the GST tag alone is 26 KDa.

Sequence

REECIHCAKNFHFHDWKCVACGEGFYPEEMPGLPHKVCRRCDENCLSCAGSSRNCSRCKTG
FTQLGTSCITNHTCSNADETFCEMVKSNRLCERKLFIQFCRTCLLAG

Host

Mouse

Reactivity

Human

Interspecies Antigen Sequence	Mouse (95)
Isotype	IgG2a Kappa
Quality Control Testing	Antibody Reactive Against Recombinant Protein. Western Blot detection against Immunogen (37.84 KDa) .
Storage Buffer	In 1x PBS, pH 7.4
Storage Instruction	Store at -20°C or lower. Aliquot to avoid repeated freezing and thawing.

Applications

- Western Blot (Recombinant protein)

[Protocol Download](#)

- Sandwich ELISA (Recombinant protein)

Detection limit for recombinant GST tagged PCSK6 is approximately 0.1ng/ml as a capture antibody.

[Protocol Download](#)

- ELISA

Gene Info — PCSK6

Entrez GeneID	5046
GeneBank Accession#	NM_002570
Protein Accession#	NP_002561
Gene Name	PCSK6
Gene Alias	PACE4, SPC4
Gene Description	proprotein convertase subtilisin/kexin type 6
Omim ID	167405
Gene Ontology	Hyperlink

Gene Summary

The protein encoded by this gene belongs to the subtilisin-like proprotein convertase family. The members of this family are proprotein convertases that process latent precursor proteins into their biologically active products. This encoded protein is a calcium-dependent serine endoprotease that can cleave precursor protein at their paired basic amino acid processing sites. Some of its substrates are - transforming growth factor beta related proteins, proalbumin, and von Willebrand factor. This gene is thought to play a role in tumor progression. Alternatively spliced transcript variants encoding different isoforms have been identified. [provided by RefSeq]

Other Designations

paired basic amino acid cleaving system 4|subtilisin-like proprotein convertase 4|subtilisin-like protease|subtilisin/kexin-like protease PACE4

Disease

- [Cardiovascular Diseases](#)
- [Diabetes Mellitus](#)
- [Edema](#)
- [Tobacco Use Disorder](#)