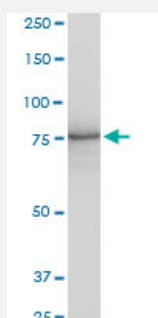


# PCSK6 polyclonal antibody (A01)

Catalog # H00005046-A01

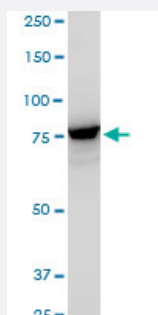
Size 50 uL

## Applications



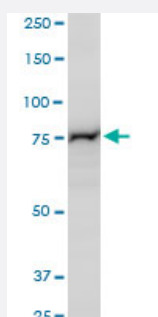
### Western Blot (Cell lysate)

PCSK6 polyclonal antibody (A01), Lot # FIS28060515QCS1. Western Blot analysis of PCSK6 expression in Raw 264.7.



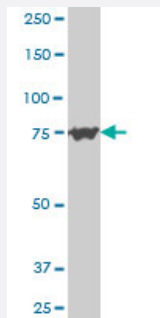
### Western Blot (Cell lysate)

PCSK6 polyclonal antibody (A01), Lot # FIS28060515QCS1. Western Blot analysis of PCSK6 expression in NIH/3T3.



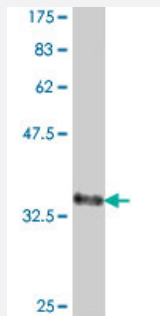
### Western Blot (Cell lysate)

PCSK6 polyclonal antibody (A01), Lot # FIS28060515QCS1. Western Blot analysis of PCSK6 expression in PC-12.



## Western Blot (Cell lysate)

PCSK6 polyclonal antibody (A01), Lot # FIS28060515QCS1 Western Blot analysis of PCSK6 expression in Hela S3 NE ( Cat # L013V3 ).



Western Blot detection against Immunogen (38.21 KDa) .

## Specification

<b>Product Description</b>	Mouse polyclonal antibody raised against a partial recombinant PCSK6.
<b>Immunogen</b>	PCSK6 (NP_002561, 860 a.a. ~ 969 a.a) partial recombinant protein with GST tag.
<b>Sequence</b>	REECIHCAKNFHFHDWKCVACGEGFYPEEMPGLPHKVCRRCDENCLSCAGSSRNCSRCKTG FTQLGTSCITNHTCSNADETFCEMVKSNRLCERKLFQFCRTCLLAG
<b>Host</b>	Mouse
<b>Reactivity</b>	Human, Mouse, Rat
<b>Interspecies Antigen Sequence</b>	Mouse (95)
<b>Quality Control Testing</b>	Antibody Reactive Against Recombinant Protein. Western Blot detection against Immunogen (38.21 KDa) .
<b>Storage Buffer</b>	50 % glycerol
<b>Storage Instruction</b>	Store at -20°C or lower. Aliquot to avoid repeated freezing and thawing.

## Applications

- Western Blot (Cell lysate)

PCSK6 polyclonal antibody (A01), Lot # FIS28060515QCS1. Western Blot analysis of PCSK6 expression in Raw 264.7.

[Protocol Download](#)

- Western Blot (Cell lysate)

PCSK6 polyclonal antibody (A01), Lot # FIS28060515QCS1. Western Blot analysis of PCSK6 expression in NIH/3T3.

[Protocol Download](#)

- Western Blot (Cell lysate)

PCSK6 polyclonal antibody (A01), Lot # FIS28060515QCS1. Western Blot analysis of PCSK6 expression in PC-12.

[Protocol Download](#)

- Western Blot (Cell lysate)

PCSK6 polyclonal antibody (A01), Lot # FIS28060515QCS1 Western Blot analysis of PCSK6 expression in Hela S3 NE ( Cat # L013V3 ).

[Protocol Download](#)

- Western Blot (Recombinant protein)

[Protocol Download](#)

- ELISA

## Gene Info — PCSK6

Entrez GeneID [5046](#)

GeneBank Accession# [NM\\_002570](#)

Protein Accession# [NP\\_002561](#)

Gene Name PCSK6

Gene Alias PACE4, SPC4

Gene Description proprotein convertase subtilisin/kexin type 6

Omim ID [167405](#)

Gene Ontology [Hyperlink](#)

**Gene Summary**

The protein encoded by this gene belongs to the subtilisin-like proprotein convertase family. The members of this family are proprotein convertases that process latent precursor proteins into their biologically active products. This encoded protein is a calcium-dependent serine endoprotease that can cleave precursor protein at their paired basic amino acid processing sites. Some of its substrates are - transforming growth factor beta related proteins, proalbumin, and von Willebrand factor. This gene is thought to play a role in tumor progression. Alternatively spliced transcript variants encoding different isoforms have been identified. [provided by RefSeq]

**Other Designations**

paired basic amino acid cleaving system 4|subtilisin-like proprotein convertase 4|subtilisin-like protease|subtilisin/kexin-like protease PACE4

**Publication Reference**

- [EXTRACELLULAR AND MEMBRANE-ASSOCIATED PROSTATE CANCER MARKERS.](#)

George G. Klee, George Vasmatazis, Farhad Kosari, Eric W. Klee

United States Patent Application Publication 2010 Feb; [Epub].

Application: Array, Mammal, Prostate cancer

**Disease**

- [Cardiovascular Diseases](#)
- [Diabetes Mellitus](#)
- [Edema](#)
- [Tobacco Use Disorder](#)