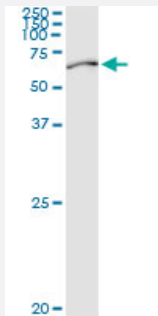


PABPC3 (Human) IP-WB Antibody Pair

Catalog # H00005042-PW1

Size 1 Set

Applications



Immunoprecipitation of PABPC3 transfected lysate using rabbit polyclonal anti-PABPC3 and Protein A Magnetic Bead ([U0007](#)), and immunoblotted with mouse purified polyclonal anti-PABPC3.

Specification

Product Description	This IP-WB antibody pair set comes with one antibody for immunoprecipitation and another to detect the precipitated protein in western blot.
Reactivity	Human
Quality Control Testing	Immunoprecipitation-Western Blot (IP-WB) Immunoprecipitation of PABPC3 transfected lysate using rabbit polyclonal anti-PABPC3 and Protein A Magnetic Bead (U0007), and immunoblotted with mouse purified polyclonal anti-PABPC3.
Supplied Product	Antibody pair set content: 1. Antibody pair for IP: rabbit polyclonal anti-PABPC3 (300 ul) 2. Antibody pair for WB: mouse purified polyclonal anti-PABPC3 (50 ug)
Storage Instruction	Store reagents of the antibody pair set at -20°C or lower. Please aliquot to avoid repeated freeze thaw cycle. Reagents should be returned to -20°C storage immediately after use.

Applications

- Immunoprecipitation-Western Blot

[Protocol Download](#)

Gene Info — PABPC3

Entrez GeneID	5042
Gene Name	PABPC3
Gene Alias	PABP3, PABPL3
Gene Description	poly(A) binding protein, cytoplasmic 3
Omim ID	604680
Gene Ontology	Hyperlink
Gene Summary	Messenger RNA stability and translation initiation are extensively under the control of poly(A)-binding proteins (PABP). See PABPC1 (MIM 604679) for background information.[supplied by OMIM]
Other Designations	poly(A)-binding protein-like 3 testis-specific poly(A)-binding protein (PABP) testis-specific poly(A)-binding protein 3