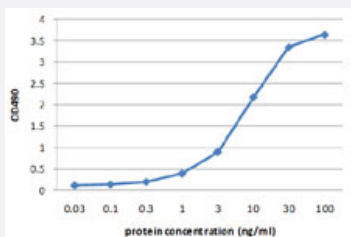


PEBP1 (Human) Matched Antibody Pair

Catalog # H00005037-AP42

Size 1 Set

Applications



Sandwich ELISA detection sensitivity ranging from 0.1 ng/ml to 100 ng/ml.

Specification

Product Description

This antibody pair set comes with a matched antibody pair to detect and quantify the protein level of human PEBP1.

Reactivity

Human

Quality Control Testing

Standard curve using recombinant protein (H00005037-P01) as an analyte.
Sandwich ELISA detection sensitivity ranging from 0.1 ng/ml to 100 ng/ml.

Supplied Product

Antibody pair set content:

1. Capture antibody: mouse monoclonal anti-PEBP1, IgG1 Kappa (100 ug)
2. Detection antibody: biotinylated mouse monoclonal anti-PEBP1, IgG2b Kappa (50 ug)

*Reagents are sufficient for at least 3-5 x 96 well plates using recommended protocols.

Storage Instruction

Store reagents of the antibody pair set at -20°C or lower. Please aliquot to avoid repeated freeze thaw cycle. Reagents should be returned to -20°C storage immediately after use.

Applications

- ELISA Pair (Recombinant protein)

[Protocol Download](#)

Gene Info — PEBP1

Entrez GeneID	5037
Gene Name	PEBP1
Gene Alias	HCNP, PBP, PEBP, RKIP
Gene Description	phosphatidylethanolamine binding protein 1
Omim ID	604591
Gene Ontology	Hyperlink
Other Designations	Raf kinase inhibitory protein prostatic binding protein