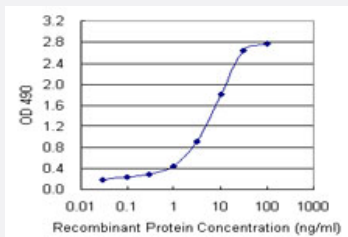


PEBP1 (Human) Matched Antibody Pair

Catalog # H00005037-AP41

Size 1 Set

Applications



Sandwich ELISA detection sensitivity ranging from 0.1 ng/ml to 100 ng/ml.

Specification

Product Description	This antibody pair set comes with a matched antibody pair to detect and quantify the protein level of human PEBP1.
Reactivity	Human
Quality Control Testing	Standard curve using recombinant protein (H00005037-P01) as an analyte. Sandwich ELISA detection sensitivity ranging from 0.1 ng/ml to 100 ng/ml.
Supplied Product	Antibody pair set content: 1. Capture antibody: mouse monoclonal anti-PEBP1, IgG1 Kappa (100 ug) 2. Detection antibody: biotinylated mouse monoclonal anti-PEBP1, IgG Mix Kappa (50 ug) *Reagents are sufficient for at least 3-5 x 96 well plates using recommended protocols.
Storage Instruction	Store reagents of the antibody pair set at -20°C or lower. Please aliquot to avoid repeated freeze thaw cycle. Reagents should be returned to -20°C storage immediately after use.

Applications

- ELISA Pair (Recombinant protein)

[Protocol Download](#)

Gene Info — PEBP1

Entrez GeneID	5037
Gene Name	PEBP1
Gene Alias	HCNP, PBP, PEBP, RKIP
Gene Description	phosphatidylethanolamine binding protein 1
Omim ID	604591
Gene Ontology	Hyperlink
Other Designations	Raf kinase inhibitory protein prostatic binding protein