

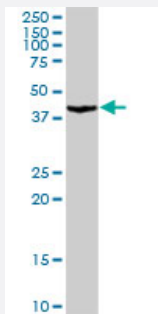
MaxPab®

PA2G4 MaxPab rabbit polyclonal antibody (D01)

Catalog # H00005036-D01

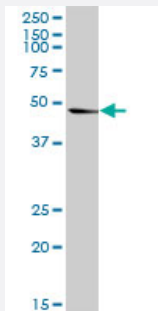
Size 100 uL

Applications



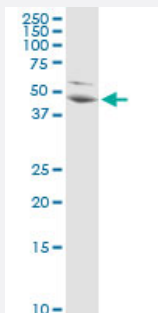
Western Blot (Tissue lysate)

PA2G4 MaxPab rabbit polyclonal antibody. Western Blot analysis of PA2G4 expression in mouse liver.



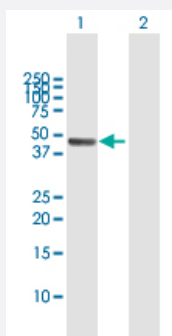
Western Blot (Tissue lysate)

PA2G4 MaxPab rabbit polyclonal antibody. Western Blot analysis of PA2G4 expression in human stomach.



Western Blot (Cell lysate)

PA2G4 MaxPab rabbit polyclonal antibody. Western Blot analysis of PA2G4 expression in HeLa.

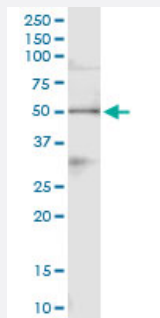


Western Blot (Transfected lysate)

Western Blot analysis of PA2G4 expression in transfected 293T cell line ([H00005036-T01](#)) by PA2G4 MaxPab polyclonal antibody.

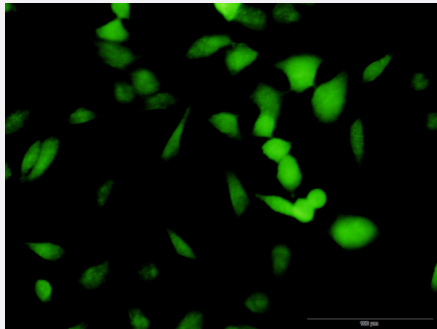
Lane 1: PA2G4 transfected lysate(43.8 KDa).

Lane 2: Non-transfected lysate.



Immunoprecipitation

Immunoprecipitation of PA2G4 transfected lysate using anti-PA2G4 MaxPab rabbit polyclonal antibody and Protein A Magnetic Bead, and immunoblotted with PA2G4 purified MaxPab mouse polyclonal antibody (B01P) ([H00005036-B01P](#)).



Immunofluorescence

Immunofluorescence of purified MaxPab antibody to PA2G4 on HeLa cell. [antibody concentration 10 ug/ml]

Specification

Product Description	Rabbit polyclonal antibody raised against a full-length human PA2G4 protein.
Immunogen	PA2G4 (NP_006182.2, 1 a.a. ~ 394 a.a) full-length human protein.
Sequence	MSGEDEQQEQTIAEDLVVTKYKMGGDIANRVLRLSLVEASSSGVSVLSLCEKGDAMIMEETGKIFK KEKEMKKGIAFPTSISVNNVCVCHFSPKSDQDYILKEGDLVKIDLGVDGFANVAHTFVVDVAQ GTQVTGRKADVIAAHLCAEAALRLVKPGNQNTQVTEAWNKVAFHSFNCTPIEGMLSHQLKQHVID GEKTIQNPTDQQKKDHEKAEFEVHEVYAVDVLVSSGEGKAKDAGQRTTIYKRDPKQYGLKMKMT SRAFFSEVERRFDAMPFTLRAFEDEKKARMGVVECAKHELLQPFNVLYEKEGEFVAQFKFTVLL MPNGPMRITSGPFEPDLYKSEMEVQDAELKALLQSSASRKTQKKKKKKASKTAENATSGETLEE NEAGD
Host	Rabbit
Reactivity	Human, Mouse
Quality Control Testing	Antibody reactive against mammalian transfected lysate.
Storage Buffer	No additive
Storage Instruction	Store at -20°C or lower. Aliquot to avoid repeated freezing and thawing.

Applications

- Western Blot (Tissue lysate)

PA2G4 MaxPab rabbit polyclonal antibody. Western Blot analysis of PA2G4 expression in mouse liver.

[Protocol Download](#)

- Western Blot (Tissue lysate)

PA2G4 MaxPab rabbit polyclonal antibody. Western Blot analysis of PA2G4 expression in human stomach.

[Protocol Download](#)

- Western Blot (Cell lysate)

PA2G4 MaxPab rabbit polyclonal antibody. Western Blot analysis of PA2G4 expression in HeLa.

[Protocol Download](#)

- Western Blot (Transfected lysate)

Western Blot analysis of PA2G4 expression in transfected 293T cell line ([H00005036-T01](#)) by PA2G4 MaxPab polyclonal antibody.

Lane 1: PA2G4 transfected lysate(43.8 KDa).

Lane 2: Non-transfected lysate.

[Protocol Download](#)

- Immunoprecipitation

Immunoprecipitation of PA2G4 transfected lysate using anti-PA2G4 MaxPab rabbit polyclonal antibody and Protein A Magnetic Bead, and immunoblotted with PA2G4 purified MaxPab mouse polyclonal antibody (B01P) ([H00005036-B01P](#)).

[Protocol Download](#)

- Immunofluorescence

Immunofluorescence of purified MaxPab antibody to PA2G4 on HeLa cell. [antibody concentration 10 ug/ml]

Gene Info — PA2G4

Entrez GeneID [5036](#)

GeneBank Accession# [BC007561](#)

Protein Accession# [NP_006182.2](#)

Gene Name PA2G4

Gene Alias EBP1, HG4-1, p38-2G4

Gene Description	proliferation-associated 2G4, 38kDa
Omim ID	602145
Gene Ontology	Hyperlink
Gene Summary	<p>This gene encodes an RNA-binding protein that is involved in growth regulation. This protein is present in pre-ribosomal ribonucleoprotein complexes and may be involved in ribosome assembly and the regulation of intermediate and late steps of rRNA processing. This protein can interact with the cytoplasmic domain of the ErbB3 receptor and may contribute to transducing growth regulatory signals. This protein is also a transcriptional co-repressor of androgen receptor-regulated genes and other cell cycle regulatory genes through its interactions with histone deacetylases. This protein has been implicated in growth inhibition and the induction of differentiation of human cancer cells. Six pseudogenes, located on chromosomes 3, 6, 9, 18, 20 and X, have been identified. [provided by RefSeq]</p>
Other Designations	ErbB-3 binding protein 1 ErbB3-binding protein 1 ErbB3-binding protein Ebp1 cell cycle protein p38-2G4 homolog