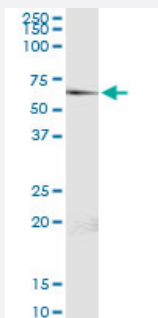


P4HB (Human) IP-WB Antibody Pair

Catalog # H00005034-PW1

Size 1 Set

Applications



Immunoprecipitation of P4HB transfected lysate using rabbit polyclonal anti-P4HB and Protein A Magnetic Bead ([U0007](#)), and immunoblotted with mouse purified polyclonal anti-P4HB.

Specification

Product Description	This IP-WB antibody pair set comes with one antibody for immunoprecipitation and another to detect the precipitated protein in western blot.
Reactivity	Human
Interspecies Antigen Sequence	Mouse (93%)
Quality Control Testing	Immunoprecipitation-Western Blot (IP-WB) Immunoprecipitation of P4HB transfected lysate using rabbit polyclonal anti-P4HB and Protein A Magnetic Bead (U0007), and immunoblotted with mouse purified polyclonal anti-P4HB.
Supplied Product	Antibody pair set content: 1. Antibody pair for IP: rabbit polyclonal anti-P4HB (300 ul) 2. Antibody pair for WB: mouse purified polyclonal anti-P4HB (50 ug)
Storage Instruction	Store reagents of the antibody pair set at -20°C or lower. Please aliquot to avoid repeated freeze thaw cycle. Reagents should be returned to -20°C storage immediately after use.

Applications

- Immunoprecipitation-Western Blot

[Protocol Download](#)

Gene Info — P4HB

Entrez GeneID	5034
Gene Name	P4HB
Gene Alias	DSI, ERBA2L, GIT, P4Hbeta, PDI, PDIA1, PHDB, PO4DB, PO4HB, PROHB
Gene Description	prolyl 4-hydroxylase, beta polypeptide
Omim ID	176790
Gene Ontology	Hyperlink
Gene Summary	<p>This gene encodes the beta subunit of prolyl 4-hydroxylase, a highly abundant multifunctional enzyme that belongs to the protein disulfide isomerase family. When present as a tetramer consisting of two alpha and two beta subunits, this enzyme is involved in hydroxylation of prolyl residues in procollagen. This enzyme is also a disulfide isomerase containing two thioredoxin domains that catalyze the formation, breakage and rearrangement of disulfide bonds. Other known functions include its ability to act as a chaperone that inhibits aggregation of misfolded proteins in a concentration-dependent manner, its ability to bind thyroid hormone, its role in both the influx and efflux of S-nitrosothiol-bound nitric oxide, and its function as a subunit of the microsomal triglyceride transfer protein complex. [provided by RefSeq]</p>
Other Designations	collagen prolyl 4-hydroxylase beta glutathione-insulin transhydrogenase procollagen-proline, 2-oxo glutarate 4-dioxygenase (proline 4-hydroxylase), beta polypeptide prolyl 4-hydroxylase, beta subunit protein disulfide isomerase family A, member 1 protein d

Disease

- [Cardiovascular Diseases](#)
- [Diabetes Mellitus](#)
- [Edema](#)