

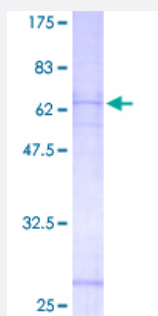
Full-Length

P2RY11 (Human) Recombinant Protein (P01)

Catalog # H00005032-P01

Size 25 ug, 10 ug

Applications



Specification

Product Description

Human P2RY11 full-length ORF (NP_002557, 1 a.a. - 371 a.a.) recombinant protein with GST-tag at N-terminal.

Sequence

MDRGAKSCPANFLAAADDKLSGFQGDFLWPILVVEFLVAVASNGLALYRFSIRKQRPWHPAVVF
SVQLAVSDLLCALTLPLAAYLYPPKHWRYGEAACRLERFLFTCNLLGSVIFITCISLNRYLGMHPF
FARSHLRPKHAWAVSAAGWVLAALLAMPTLSFSLKRPQQGAGNCSVARPEACIKCLGTADHG
LAAYRAYSLVLAGLGCGPLLLTLAAYGALGRAVLRSPGMTVAEKL RVAALVASGVALYASSYPY
HIMRVLNVDARRRWSTRCPSFADIAQATAALELGPYVG YQVMRGLMPLAFCVHPLLYMAAVPSL
GCCCRHCPGYRDSWNPEDAKSTGQALPLNATAAPKPSEPQSRELSQ

Host

Wheat Germ (in vitro)

Theoretical MW (kDa)

66.44

Preparation Method

[in vitro wheat germ expression system](#)

Purification

Glutathione Sepharose 4 Fast Flow

Quality Control Testing

12.5% SDS-PAGE Stained with Coomassie Blue.

Storage Buffer

50 mM Tris-HCl, 10 mM reduced Glutathione, pH=8.0 in the elution buffer.

Storage Instruction

Store at -80°C. Aliquot to avoid repeated freezing and thawing.

Note

Best use within three months from the date of receipt of this protein.

Applications

- Enzyme-linked Immunoabsorbent Assay
- Western Blot (Recombinant protein)
- Antibody Production
- Protein Array

Gene Info — P2RY11

Entrez GeneID [5032](#)

GeneBank Accession# [NM_002566.1](#)

Protein Accession# [NP_002557](#)

Gene Name P2RY11

Gene Alias P2Y11

Gene Description purinergic receptor P2Y, G-protein coupled, 11

Omim ID [602697](#)

Gene Ontology [Hyperlink](#)

Gene Summary

The product of this gene belongs to the family of G-protein coupled receptors. This family has several receptor subtypes with different pharmacological selectivity, which overlaps in some cases, for various adenosine and uridine nucleotides. This receptor is coupled to the stimulation of the phosphoinositide and adenylyl cyclase pathways and behaves as a selective purinoceptor. Naturally occurring read-through transcripts, resulting from intergenic splicing between this gene and an immediately upstream gene (PPAN, encoding peter pan homolog), have been found. The PPAN-P2RY11 read-through mRNA is ubiquitously expressed and encodes a fusion protein that shares identity with each individual gene product. [provided by RefSeq]

Other Designations P2Y purinoceptor 11|P2Y11 receptor|purinergic receptor P2Y11

Pathway

- [Neuroactive ligand-receptor interaction](#)

Disease

- [Myocardial Infarction](#)