

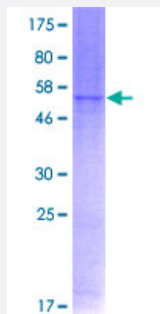
Full-Length

## P2RY6 (Human) Recombinant Protein (P01)

Catalog # H00005031-P01

Size 25 ug, 10 ug

### Applications



### Specification

#### Product Description

Human P2RY6 full-length ORF ( NP\_004145.1, 1 a.a. - 328 a.a.) recombinant protein with GST-tag at N-terminal.

#### Sequence

MEWDNCTGQALGLPPTTCVYRENFKQLLLPPVYSAVLAAGLPLNICVITQICTSRRALTRTAVYTLN  
LALADLLYACSLPLLINYAQGDHWPFGDFACRLVRFLFYANLHGSILFTCISFQRYLGICHPLAPW  
HKRGGRRAAWLVCVAVWLAVTTQCLPTAIFAATGIQRNRTVCYDLSPPALATHYMPYGMALTVIGF  
LLPFAALLACYLLACRLCRQDGAEPVAQERRGKAARMAVVVAAAFAISFLPFHITKTAYLAVRS  
TPGVPCTVLEAFAAAAYKGTRPFASANSVLDPIIFYFTQKKFRRRPHELLQKLTAKWQRQGR

#### Host

Wheat Germ (in vitro)

#### Theoretical MW (kDa)

62.8

#### Interspecies Antigen Sequence

Mouse (87); Rat (88)

#### Preparation Method

[in vitro wheat germ expression system](#)

#### Purification

Glutathione Sepharose 4 Fast Flow

#### Quality Control Testing

12.5% SDS-PAGE Stained with Coomassie Blue.

#### Storage Buffer

50 mM Tris-HCl, 10 mM reduced Glutathione, pH=8.0 in the elution buffer.

**Storage Instruction**

Store at -80°C. Aliquot to avoid repeated freezing and thawing.

**Note**

Best use within three months from the date of receipt of this protein.

## Applications

- Enzyme-linked Immunoabsorbent Assay
- Western Blot (Recombinant protein)
- Antibody Production
- Protein Array

## Gene Info — P2RY6

**Entrez GeneID**[5031](#)**GeneBank Accession#**[NM\\_004154.3](#)**Protein Accession#**[NP\\_004145.1](#)**Gene Name**

P2RY6

**Gene Alias**

MGC15335, P2Y6

**Gene Description**

pyrimidinergic receptor P2Y, G-protein coupled, 6

**Omim ID**[602451](#)**Gene Ontology**[Hyperlink](#)**Gene Summary**

The product of this gene belongs to the family of G-protein coupled receptors. This family has several receptor subtypes with different pharmacological selectivity, which overlaps in some cases, for various adenosine and uridine nucleotides. This receptor is responsive to UDP, partially responsive to UTP and ADP, and not responsive to ATP. Four transcript variants encoding the same isoform have been identified for this gene. [provided by RefSeq]

**Other Designations**

G-coupled nucleotide receptor|P2 purinoceptor|P2Y purinoceptor 6|P2Y6 receptor|pyrimidinergic receptor P2Y6

## Pathway

- [Neuroactive ligand-receptor interaction](#)

## Disease

- [Tobacco Use Disorder](#)