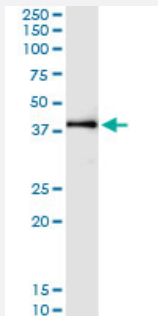


OXA1L (Human) IP-WB Antibody Pair

Catalog # H00005018-PW2

Size 1 Set

Applications



Immunoprecipitation of OXA1L transfected lysate using rabbit polyclonal anti-OXA1L and Protein A Magnetic Bead ([U0007](#)), and immunoblotted with mouse purified polyclonal anti-OXA1L.

Specification

Product Description	This IP-WB antibody pair set comes with one antibody for immunoprecipitation and another to detect the precipitated protein in western blot.
Reactivity	Human
Interspecies Antigen Sequence	Mouse (73%); Rat (73%)
Quality Control Testing	Immunoprecipitation-Western Blot (IP-WB) Immunoprecipitation of OXA1L transfected lysate using rabbit polyclonal anti-OXA1L and Protein A Magnetic Bead (U0007), and immunoblotted with mouse purified polyclonal anti-OXA1L.
Supplied Product	Antibody pair set content: 1. Antibody pair for IP: rabbit polyclonal anti-OXA1L (300 ul) 2. Antibody pair for WB: mouse purified polyclonal anti-OXA1L (50 ug)
Storage Instruction	Store reagents of the antibody pair set at -20°C or lower. Please aliquot to avoid repeated freeze thaw cycle. Reagents should be returned to -20°C storage immediately after use.

Applications

- Immunoprecipitation-Western Blot

[Protocol Download](#)

Gene Info — OXA1L

Entrez GeneID	5018
Gene Name	OXA1L
Gene Alias	MGC133129
Gene Description	oxidase (cytochrome c) assembly 1-like
Omim ID	601066
Gene Ontology	Hyperlink
Other Designations	OTTHUMP00000027912

Pathway

- [Protein export](#)

Disease

- [Genetic Predisposition to Disease](#)
- [Narcolepsy](#)