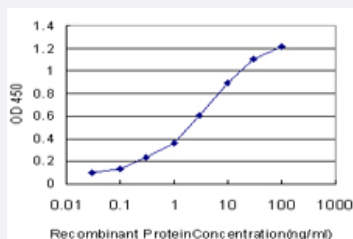


OTX1 monoclonal antibody (M03), clone 4E5

Catalog # H00005013-M03

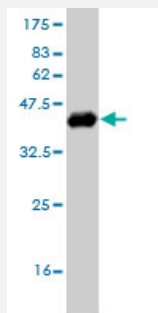
Size 100 ug

Applications



Sandwich ELISA (Recombinant protein)

Detection limit for recombinant GST tagged OTX1 is approximately 0.1ng/ml as a capture antibody.



Western Blot detection against Immunogen (37.51 KDa) .

Specification

Product Description	Mouse monoclonal antibody raised against a partial recombinant OTX1.
Immunogen	OTX1 (NP_055377, 10 a.a. ~ 116 a.a) partial recombinant protein with GST tag. MW of the GST tag alone is 26 KDa.
Sequence	YGMNGLGLAGPAMDLLHPSVGYPATPRKQRRERTTFTRSQLDVLEALFAKTRYPDIFMREEVALKI NLPESRVQVWFKNRRRAKCRQQQSGSGTKSRPAKKKSSPVR
Host	Mouse
Reactivity	Human

Interspecies Antigen Sequence	Mouse (97); Rat (98)
Isotype	IgG2a Kappa
Quality Control Testing	Antibody Reactive Against Recombinant Protein. Western Blot detection against Immunogen (37.51 KDa) .
Storage Buffer	In 1x PBS, pH 7.4
Storage Instruction	Store at -20°C or lower. Aliquot to avoid repeated freezing and thawing.

Applications

- Western Blot (Recombinant protein)

[Protocol Download](#)

- Sandwich ELISA (Recombinant protein)

Detection limit for recombinant GST tagged OTX1 is approximately 0.1ng/ml as a capture antibody.

[Protocol Download](#)

- ELISA

Gene Info — OTX1

Entrez GeneID	5013
GeneBank Accession#	NM_014562
Protein Accession#	NP_055377
Gene Name	OTX1
Gene Alias	FLJ38361, MGC15736
Gene Description	orthodenticle homeobox 1
Omim ID	600036
Gene Ontology	Hyperlink

Gene Summary

This gene encodes a member of the bicoid sub-family of homeodomain-containing transcription factors. The encoded protein acts as a transcription factor and may play a role in brain and sensory organ development. A similar protein in mice is required for proper brain and sensory organ development and can cause epilepsy. [provided by RefSeq]

Other Designations

homeobox protein OTX1|orthodenticle homolog 1

Disease

- [Mental Disorders](#)
- [Schizophrenia](#)