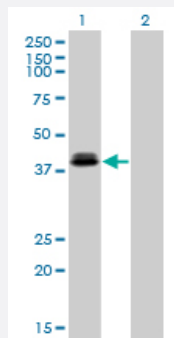


# OTX1 monoclonal antibody (M01), clone 1F2

Catalog # H00005013-M01

Size 100 ug

## Applications

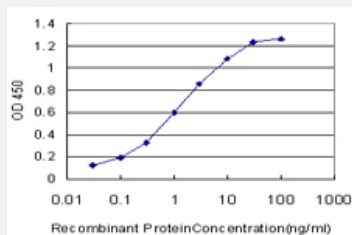


### Western Blot (Transfected lysate)

Western Blot analysis of OTX1 expression in transfected 293T cell line by OTX1 monoclonal antibody (M01), clone 1F2.

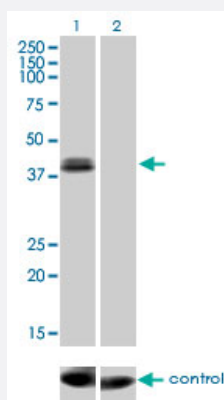
Lane 1: OTX1 transfected lysate (37.3 kDa).

Lane 2: Non-transfected lysate.



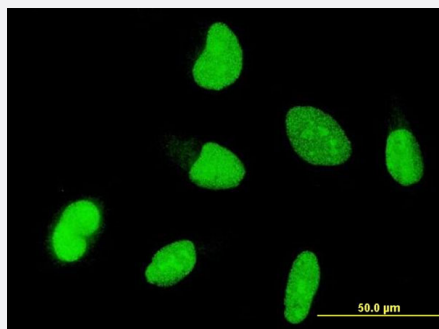
### Sandwich ELISA (Recombinant protein)

Detection limit for recombinant GST tagged OTX1 is approximately 0.03 ng/ml as a capture antibody.



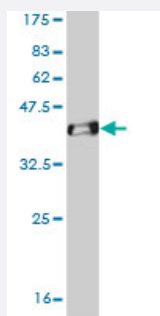
### RNAi Knockdown (Antibody validated)

Western blot analysis of OTX1 over-expressed 293 cell line, cotransfected with OTX1 Validated Chimera RNAi (Cat # H00005013-R01V) (Lane 2) or non-transfected control (Lane 1). Blot probed with OTX1 monoclonal antibody (M01), clone 1F2 (Cat # H00005013-M01). GAPDH (36.1 kDa) used as specificity and loading control.



## Immunofluorescence

Immunofluorescence of monoclonal antibody to OTX1 on HeLa cell . [antibody concentration 10 ug/ml]



Western Blot detection against Immunogen (37.51 KDa) .

## Specification

<b>Product Description</b>	Mouse monoclonal antibody raised against a partial recombinant OTX1.
<b>Immunogen</b>	OTX1 (NP_055377, 10 a.a. ~ 116 a.a) partial recombinant protein with GST tag. MW of the GST tag alone is 26 KDa.
<b>Sequence</b>	YGMNGLGLAGPAMDLLHPSVGYPATPRKQRRERTTFTRSQLDVLEALFAKTRYPDIFMREEVALKI NLPESRVQVWFKNRRRAKCRQQQSGSGTKSRPAKKKSSPVR
<b>Host</b>	Mouse
<b>Reactivity</b>	Human
<b>Interspecies Antigen Sequence</b>	Mouse (97); Rat (98)
<b>Isotype</b>	IgG2a Kappa
<b>Quality Control Testing</b>	Antibody Reactive Against Recombinant Protein. Western Blot detection against Immunogen (37.51 KDa) .
<b>Storage Buffer</b>	In 1x PBS, pH 7.4
<b>Storage Instruction</b>	Store at -20°C or lower. Aliquot to avoid repeated freezing and thawing.

## Applications

- Western Blot (Transfected lysate)

Western Blot analysis of OTX1 expression in transfected 293T cell line by OTX1 monoclonal antibody (M01), clone 1F2.

Lane 1: OTX1 transfected lysate(37.3 KDa).

Lane 2: Non-transfected lysate.

[Protocol Download](#)

- Western Blot (Recombinant protein)

[Protocol Download](#)

- Sandwich ELISA (Recombinant protein)

Detection limit for recombinant GST tagged OTX1 is approximately 0.03ng/ml as a capture antibody.

[Protocol Download](#)

- ELISA

- RNAi Knockdown (Antibody validated)

Western blot analysis of OTX1 over-expressed 293 cell line, cotransfected with OTX1 Validated Chimera RNAi ( Cat # H00005013-R01V ) (Lane 2) or non-transfected control (Lane 1). Blot probed with OTX1 monoclonal antibody (M01), clone 1F2 (Cat # H00005013-M01 ). GAPDH ( 36.1 kDa ) used as specificity and loading control.

[Protocol Download](#)

- Immunofluorescence

Immunofluorescence of monoclonal antibody to OTX1 on HeLa cell . [antibody concentration 10 ug/ml]

## Gene Info — OTX1

Entrez GeneID

[5013](#)

GeneBank Accession#

[NM\\_014562](#)

Protein Accession#

[NP\\_055377](#)

Gene Name

OTX1

Gene Alias

FLJ38361, MGC15736

Gene Description	orthodenticle homeobox 1
Omim ID	<a href="#">600036</a>
Gene Ontology	<a href="#">Hyperlink</a>
Gene Summary	This gene encodes a member of the bicoid sub-family of homeodomain-containing transcription factors. The encoded protein acts as a transcription factor and may play a role in brain and sensory organ development. A similar protein in mice is required for proper brain and sensory organ development and can cause epilepsy. [provided by RefSeq]
Other Designations	homeobox protein OTX1 orthodenticle homolog 1

## Disease

- [Mental Disorders](#)
- [Schizophrenia](#)