

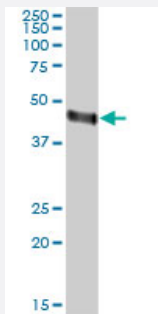
MaxPab®

ORM2 purified MaxPab mouse polyclonal antibody (B01P)

Catalog # H00005005-B01P

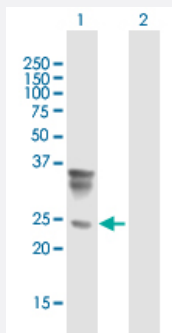
Size 50 ug

Applications



Western Blot (Tissue lysate)

ORM2 MaxPab polyclonal antibody. Western Blot analysis of ORM2 expression in human kidney.



Western Blot (Transfected lysate)

Western Blot analysis of ORM2 expression in transfected 293T cell line ([H00005005-T02](#)) by ORM2 MaxPab polyclonal antibody.

Lane 1: ORM2 transfected lysate(22.11 KDa).

Lane 2: Non-transfected lysate.

Specification

Product Description

Mouse polyclonal antibody raised against a full-length human ORM2 protein.

Immunogen

ORM2 (NP_000599.1, 1 a.a. ~ 201 a.a) full-length human protein.

Sequence

MALSWVLTVLSLLPLLEAQIPLCANLVPVPITNATLDRITGKWFYIASAFRNEEYNKSVQEIQATFFY
FTPKNKTEDTIFLREYQTRQNQCFFYNSSYLNQVRENGTVSRYEGGREHVAHLLFLRDTKTLMFGSYL
DDEKNWGLSFYADKPETTKEQLGEFYALDCLCIPRSDVMYTDWKKDKCEPLEKQHEKERKQE
EGES

Host

Mouse

Reactivity

Human

Quality Control Testing	Antibody reactive against mammalian transfected lysate.
Storage Buffer	In 1x PBS, pH 7.4
Storage Instruction	Store at -20°C or lower. Aliquot to avoid repeated freezing and thawing.

Applications

- Western Blot (Tissue lysate)

ORM2 MaxPab polyclonal antibody. Western Blot analysis of ORM2 expression in human kidney.

[Protocol Download](#)

- Western Blot (Transfected lysate)

Western Blot analysis of ORM2 expression in transfected 293T cell line ([H00005005-T02](#)) by ORM2 MaxPab polyclonal antibody.

Lane 1: ORM2 transfected lysate(22.11 KDa).

Lane 2: Non-transfected lysate.

[Protocol Download](#)

Gene Info — ORM2

Entrez GeneID	5005
GeneBank Accession#	NM_000608
Protein Accession#	NP_000599.1
Gene Name	ORM2
Gene Alias	AGP-B, AGP-B', AGP2
Gene Description	orosomucoid 2
Omim ID	138610
Gene Ontology	Hyperlink
Gene Summary	This gene encodes a key acute phase plasma protein. Because of its increase due to acute inflammation, this protein is classified as an acute-phase reactant. The specific function of this protein has not yet been determined; however, it may be involved in aspects of immunosuppression. [provided by RefSeq]
Other Designations	OTTHUMP00000022746 alpha-1-acid glycoprotein, type 2

Disease

- [Breast cancer](#)
- [Genetic Predisposition to Disease](#)
- [Leukemia](#)