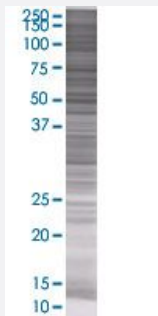


SLC22A18 293T Cell Transient Overexpression Lysate(Denatured)

Catalog # H00005002-T01

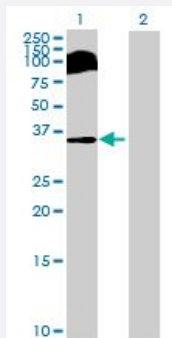
Size 100 uL

Applications



SDS-PAGE Gel

SLC22A18 transfected lysate.



Western Blot

Lane 1: SLC22A18 transfected lysate (46.75 KDa)

Lane 2: Non-transfected lysate.

Specification

Transfected Cell Line	293T
Plasmid	pCMV-SLC22A18 full-length
Host	Human
Theoretical MW (kDa)	46.75
Interspecies Antigen Sequence	Mouse (79); Rat (77)

Quality Control Testing

Transient overexpression cell lysate was tested with Anti-SLC22A18 antibody ([H00005002-B01](#)) by Western Blots.
SDS-PAGE Gel
SLC22A18 transfected lysate.
Western Blot
Lane 1: SLC22A18 transfected lysate (46.75 KDa)
Lane 2: Non-transfected lysate.

Storage Buffer

1X Sample Buffer (50 mM Tris-HCl, 2% SDS, 10% glycerol, 300 mM 2-mercaptoethanol, 0.01% Bromophenol blue)

Storage Instruction

Store at -80°C. Aliquot to avoid repeated freezing and thawing.

Applications

- Western Blot

Gene Info — SLC22A18

Entrez GeneID

[5002](#)

GeneBank Accession#

[NM_002555.3](#)

Protein Accession#

[NP_002546.2](#)

Gene Name

SLC22A18

Gene Alias

BWR1A, BWSCR1A, DKFZp667A184, HET, IMPT1, ITM, ORCTL2, SLC22A1L, TSSC5, p45-BWR1A

Gene Description

solute carrier family 22, member 18

Omim ID

[114480](#) [211980](#) [268210](#) [602631](#)

Gene Ontology

[Hyperlink](#)

Gene Summary

This gene is one of several tumor-suppressing subtransferable fragments located in the imprinted gene domain of 11p15.5, an important tumor-suppressor gene region. Alterations in this region have been associated with the Beckwith-Wiedemann syndrome, Wilms tumor, rhabdomyosarcoma, adrenocortical carcinoma, and lung, ovarian, and breast cancer. This gene may play a role in malignancies and disease that involve this region as well as the transport of chloroquine- and quinidine-related compounds in the kidney. Two alternative transcripts encoding the same isoform have been described. [provided by RefSeq]

Other Designations

Beckwith-Wiedemann syndrome chromosome region 1, candidate A|OTTHUMP00000011732|OTTHUMP00000011733|efflux transporter-like protein|imprinted multi-membrane spanning polypeptide transporter-related protein|organic cation transporter-like 2|p45 Beckwith-Wi
