

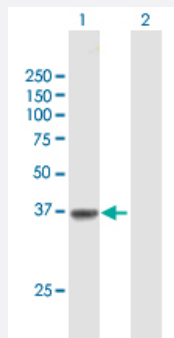
MaxPab®

SLC22A18 purified MaxPab mouse polyclonal antibody (B01P)

Catalog # H00005002-B01P

Size 50 ug

Applications



Western Blot (Transfected lysate)

Western Blot analysis of SLC22A18 expression in transfected 293T cell line ([H00005002-T01](#)) by SLC22A18 MaxPab polyclonal antibody.

Lane 1: SLC22A18 transfected lysate(46.64 KDa).

Lane 2: Non-transfected lysate.

Specification

Product Description Mouse polyclonal antibody raised against a full-length human SLC22A18 protein.

Immunogen SLC22A18 (NP_002546.2, 1 a.a. ~ 424 a.a) full-length human protein.

Sequence MQGARAPRDQGQSPGRMSALGRSSVILLTYVLAATELTCLFMQFSIVPYLSRKLGLDSIAFGYLQT
TFGVLQLLGGPVFGRFADQQRGARAALTSFLAALALYLLAAASSPALPGVYLLFASRLPGALMHT
LPAAQMVITDLSAPEERPAALGRLGLCFGVGVILGSLLGGTLVSAYGIQCPAILAALATLLGAVLSFT
CIPASTKGAKTDAQAPLPGGPRASVFDLKAIASLLRLPDVPRIFLVKVASNCPTGLFMVMFSIISMD
FFQLEAAQAGYMSFFGLLQMVTQGLVIGQLSSHFSSEEVLLRASVLVFIVGLAMAWMSSVFHFC
LLVPGLVFSLCTLNVTDSMLIKAVSTSDTGMTLGLCASVQPLLRTLGPVGGLLYRSFGVPVFGH
VQVAINTLVLLVLWRKPMPQRKDKVR

Host Mouse

Reactivity Human

Interspecies Antigen Sequence Mouse (79); Rat (77)

Quality Control Testing Antibody reactive against mammalian transfected lysate.

Storage Buffer In 1x PBS, pH 7.4

Storage Instruction

Store at -20°C or lower. Aliquot to avoid repeated freezing and thawing.

Applications

- Western Blot (Transfected lysate)

Western Blot analysis of SLC22A18 expression in transfected 293T cell line ([H00005002-T01](#)) by SLC22A18 MaxPab polyclonal antibody.

Lane 1: SLC22A18 transfected lysate(46.64 KDa).

Lane 2: Non-transfected lysate.

[Protocol Download](#)

Gene Info — SLC22A18

Entrez GeneID [5002](#)

GeneBank Accession# [NM_002555.3](#)

Protein Accession# [NP_002546.2](#)

Gene Name SLC22A18

Gene Alias BWR1A, BWSCR1A, DKFZp667A184, HET, IMPT1, ITM, ORCTL2, SLC22A1L, TSSC5, p45-BWR1A

Gene Description solute carrier family 22, member 18

Omim ID [114480 211980 268210 602631](#)

Gene Ontology [Hyperlink](#)

Gene Summary This gene is one of several tumor-suppressing subtransferable fragments located in the imprinted gene domain of 11p15.5, an important tumor-suppressor gene region. Alterations in this region have been associated with the Beckwith-Wiedemann syndrome, Wilms tumor, rhabdomyosarcoma, adrenocortical carcinoma, and lung, ovarian, and breast cancer. This gene may play a role in malignancies and disease that involve this region as well as the transport of chloroquine- and quinidine-related compounds in the kidney. Two alternative transcripts encoding the same isoform have been described. [provided by RefSeq]

Other Designations Beckwith-Wiedemann syndrome chromosome region 1, candidate A|OTTHUMP00000011732|OTTHUMP00000011733|efflux transporter-like protein|imprinted multi-membrane spanning polyspecific transporter-related protein|organic cation transporter-like 2|p45 Beckwith-Wi