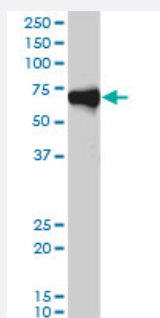


ORC2L monoclonal antibody (M01), clone 3E11-1G5

Catalog # H00004999-M01

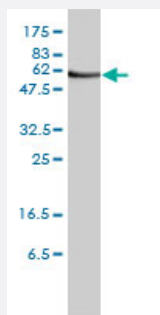
Size 100 ug

Applications



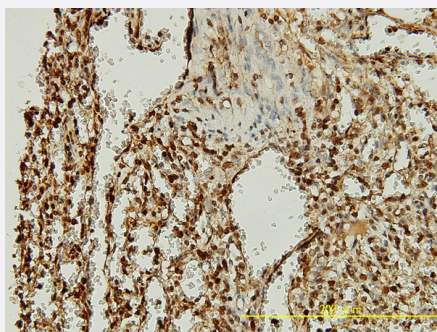
Western Blot (Cell lysate)

ORC2L monoclonal antibody (M01), clone 3E11-1G5. Western Blot analysis of ORC2L expression in HeLa S3 NE (Cat # L013V3).



Western Blot (Cell lysate)

ORC2L monoclonal antibody (M01), clone 3E11-1G5 Western Blot analysis of ORC2L expression in Jurkat (Cat # L017V1).

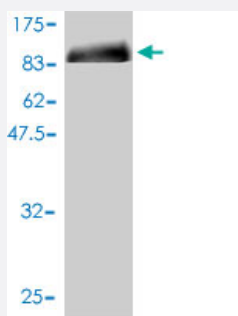
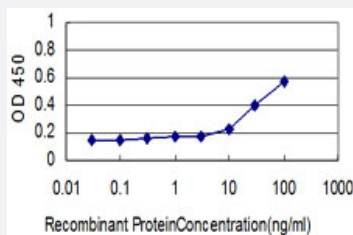


Immunohistochemistry (Formalin/PFA-fixed paraffin-embedded sections)

Immunoperoxidase of monoclonal antibody to ORC2L on formalin-fixed paraffin-embedded human spleen tissue.[antibody concentration 5 ug/ml]

Sandwich ELISA (Recombinant protein)

Detection limit for recombinant GST tagged ORC2L is approximately 0.3ng/ml as a capture antibody.



Western Blot detection against Immunogen (89.21 KDa) .

Specification

Product Description	Mouse monoclonal antibody raised against a full length recombinant ORC2L.
Immunogen	ORC2L (AAH14834, 1 a.a. ~ 577 a.a) full-length recombinant protein with GST tag. MW of the GST tag alone is 26 KDa.
Sequence	<p>MSKPELKEDKMLEVHFVGDDDLNHLNDREGGAKLKKERAQLLVNPKKIKKPEYDLEEDDQEV</p> <p>KDQNYVEIMGRDVQESLKNGSATGGGNKVYSFQNRKHSEKMAKLASELAKTPQKSVSFSLKND</p> <p>PEITINVPQSSKGHSASDKVQPKNNDKSEFLSTAPRSLRKRLVPRSHSDSESEYSASNSDDEG</p> <p>VAQEHEEDTNAVIFSQKIQAQNRVVSAPVGKETPSKRMKRDKTSDLVEEYFEAHSSSKVLTS</p> <p>DRTLQKLKRAKLDQQTLRNLLSKVSPSFSAELKQLNQYQYKLFHKWMLQLHLGFNIVLYGLGSKRDLL</p> <p>ERFRTTMLQDSIHVVINGFFPGISVKSVLNSITEEVLDMGTFRSILDQLDWVWVNFKEDSSLELFLLI</p> <p>HNLDLSQMLRGEKSQQIIGQLSSLHNHLYASIDHLNAPLMWDHAKQSLFNWLWYETTTYSPTYETS</p> <p>YENSLLVKQSGSLPLSSLTHVLRSLTPNARGIFRLLIKYQLDNQDNPSYIGLSFQDFYQQCREAFLV</p> <p>NSDLTLRAQLTEFRDHKLIRTKKGTGVEYLLIPVDNGTLTDFLEKEEEEA</p>
Host	Mouse
Reactivity	Human
Interspecies Antigen Sequence	Mouse (79); Rat (79)
Isotype	IgG1 kappa
Quality Control Testing	<p>Antibody Reactive Against Recombinant Protein.</p> <p>Western Blot detection against Immunogen (89.21 KDa) .</p>

Storage Buffer

In 1x PBS, pH 7.4

Storage Instruction

Store at -20°C or lower. Aliquot to avoid repeated freezing and thawing.

Applications

- Western Blot (Cell lysate)

ORC2L monoclonal antibody (M01), clone 3E11-1G5. Western Blot analysis of ORC2L expression in Hela S3 NE (Cat # L013V3).

[Protocol Download](#)

- Western Blot (Cell lysate)

ORC2L monoclonal antibody (M01), clone 3E11-1G5 Western Blot analysis of ORC2L expression in Jurkat (Cat # L017V1).

[Protocol Download](#)

- Western Blot (Recombinant protein)

[Protocol Download](#)

- Immunohistochemistry (Formalin/PFA-fixed paraffin-embedded sections)

Immunoperoxidase of monoclonal antibody to ORC2L on formalin-fixed paraffin-embedded human spleen tissue.[antibody concentration 5 ug/ml]

[Protocol Download](#)

- Sandwich ELISA (Recombinant protein)

Detection limit for recombinant GST tagged ORC2L is approximately 0.3ng/ml as a capture antibody.

[Protocol Download](#)

- ELISA

Gene Info — ORC2L

Entrez GeneID[4999](#)**GeneBank Accession#**[BC014834](#)**Protein Accession#**[AAH14834](#)**Gene Name**

ORC2L

Gene Alias	ORC2
Gene Description	origin recognition complex, subunit 2-like (yeast)
Omim ID	601182
Gene Ontology	Hyperlink
Gene Summary	The origin recognition complex (ORC) is a highly conserved six subunits protein complex essential for the initiation of the DNA replication in eukaryotic cells. Studies in yeast demonstrated that ORC binds specifically to origins of replication and serves as a platform for the assembly of additional initiation factors such as Cdc6 and Mcm proteins. The protein encoded by this gene is a subunit of the ORC complex. This protein forms a core complex with ORC3L, -4L, and -5L. It also interacts with CDC45L and MCM10, which are proteins known to be important for the initiation of DNA replication. This protein has been demonstrated to specifically associate with the origin of replication of Epstein-Barr virus in human cells, and is thought to be required for DNA replication from viral origin of replication. [provided by RefSeq]
Other Designations	origin of replication 2-like origin recognition complex protein 2 homolog origin recognition complex, subunit 2

Publication Reference

- [RBM3-regulated genes promote DNA integrity and affect clinical outcome in epithelial ovarian cancer.](#)

Ehlen A, Nodin B, Rexhepaj E, Brandstedt J, Uhlen M, Alvarado-Kristensson M, Ponten F, Brennan DJ, Jirstrom K.

Translational Oncology 2011 Aug; 4(4):212.

Application: WB-Ce, Human, A2780 Cells

Pathway

- [Cell cycle](#)