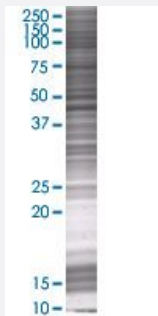


OR2C1 293T Cell Transient Overexpression Lysate(Denatured)

Catalog # H00004993-T01

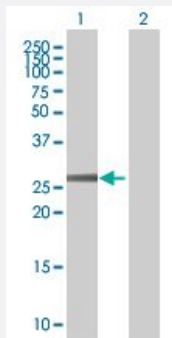
Size 100 uL

Applications



SDS-PAGE Gel

OR2C1 transfected lysate.



Western Blot

Lane 1: OR2C1 transfected lysate (34.43 KDa)

Lane 2: Non-transfected lysate.

Specification

Transfected Cell Line	293T
Plasmid	pCMV-OR2C1 full-length
Host	Human
Theoretical MW (kDa)	34.43
Interspecies Antigen Sequence	Mouse (83); Rat (86)

Quality Control Testing

Transient overexpression cell lysate was tested with Anti-OR2C1 antibody ([H00004993-B01](#)) by Western Blots.
SDS-PAGE Gel
OR2C1 transfected lysate.
Western Blot
Lane 1: OR2C1 transfected lysate (34.43 KDa)
Lane 2: Non-transfected lysate.

Storage Buffer

1X Sample Buffer (50 mM Tris-HCl, 2% SDS, 10% glycerol, 300 mM 2-mercaptoethanol, 0.01% Bromophenol blue)

Storage Instruction

Store at -80°C. Aliquot to avoid repeated freezing and thawing.

Applications

- Western Blot

Gene Info — OR2C1

Entrez GeneID[4993](#)**GeneBank Accession#**[NM_012368.1](#)**Protein Accession#**[AAI30329.1](#)**Gene Name**

OR2C1

Gene Alias

MGC163200, MGC95444, OLFmf3, OR2C2P

Gene Description

olfactory receptor, family 2, subfamily C, member 1

Gene Ontology[Hyperlink](#)**Gene Summary**

Olfactory receptors interact with odorant molecules in the nose, to initiate a neuronal response that triggers the perception of a smell. The olfactory receptor proteins are members of a large family of G-protein-coupled receptors (GPCR) arising from single coding-exon genes. Olfactory receptors share a 7-transmembrane domain structure with many neurotransmitter and hormone receptors and are responsible for the recognition and G protein-mediated transduction of odorant signals. The olfactory receptor gene family is the largest in the genome. The nomenclature assigned to the olfactory receptor genes and proteins for this organism is independent of other organisms. [provided by RefSeq]

Other Designations

olfactory receptor OR16-1|olfactory receptor OR16-2|olfactory receptor, family 2, subfamily C, member 2 pseudogene

Pathway

- [Olfactory transduction](#)