

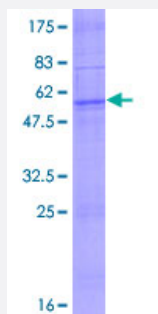
Full-Length

OR2C1 (Human) Recombinant Protein (P01)

Catalog # H00004993-P01

Size 2 ug

Applications



Specification

Product Description

Human OR2C1 full-length ORF (AA130329.1, 1 a.a. - 312 a.a.) recombinant protein with GST-tag at N-terminal.

Sequence

MDGVNDSSLQGFVLMGISDHPQLEMIFFAILFSYLLTLLGNSTIILLRLEARLHTPMYFFLSNLSSL
DLAFATSSVPQMLINLWGPCKTISYGGCITQLYVFLWLGATECILLVMAFDYVAVCRPLRYTAIM
NPQLCWLLAVIAWLGGGNSVIQSTFTLQLPLCGHRRVEGFLCEVPAMIKLACGDTSLNQAVLNG
VCTFFTAVPLSIVISYCLIAQAVLKIRSAEGRRKAFNTCLSHLLVVFLFYGSASYGYLLPAKNSKQDQ
GKFISLFYSLVTPMVNPLYTLRNMEVKGALRRLLGKGREVG

Host

Wheat Germ (in vitro)

Theoretical MW (kDa)

60.9

Interspecies Antigen Sequence

Mouse (83); Rat (86)

Preparation Method

[in vitro wheat germ expression system](#)

Purification

Glutathione Sepharose 4 Fast Flow

Quality Control Testing

12.5% SDS-PAGE Stained with Coomassie Blue.

Storage Buffer

50 mM Tris-HCl, 10 mM reduced Glutathione, pH=8.0 in the elution buffer.

Storage Instruction

Store at -80°C. Aliquot to avoid repeated freezing and thawing.

Note

Best use within three months from the date of receipt of this protein.

Applications

- Enzyme-linked Immunoabsorbent Assay
- Western Blot (Recombinant protein)
- Antibody Production
- Protein Array

Gene Info — OR2C1

Entrez GeneID[4993](#)**GeneBank Accession#**[BC130328.1](#)**Protein Accession#**[AAI30329.1](#)**Gene Name**

OR2C1

Gene Alias

MGC163200, MGC95444, OLFmf3, OR2C2P

Gene Description

olfactory receptor, family 2, subfamily C, member 1

Gene Ontology[Hyperlink](#)**Gene Summary**

Olfactory receptors interact with odorant molecules in the nose, to initiate a neuronal response that triggers the perception of a smell. The olfactory receptor proteins are members of a large family of G-protein-coupled receptors (GPCR) arising from single coding-exon genes. Olfactory receptors share a 7-transmembrane domain structure with many neurotransmitter and hormone receptors and are responsible for the recognition and G protein-mediated transduction of odorant signals. The olfactory receptor gene family is the largest in the genome. The nomenclature assigned to the olfactory receptor genes and proteins for this organism is independent of other organisms. [provided by RefSeq]

Other Designations

olfactory receptor OR16-1|olfactory receptor OR16-2|olfactory receptor, family 2, subfamily C, member 2 pseudogene

Pathway

- [Olfactory transduction](#)