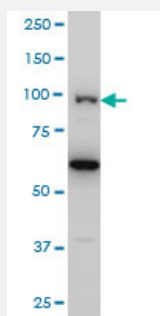


OCRL monoclonal antibody (M02), clone 4A6

Catalog # H00004952-M02

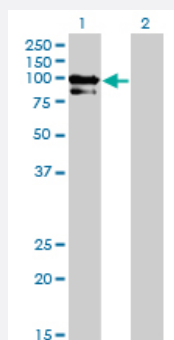
Size 100 ug

Applications



Western Blot (Cell lysate)

OCRL monoclonal antibody (M02), clone 4A6 Western Blot analysis of OCRL expression in HeLa S3 NE (Cat # L013V3).

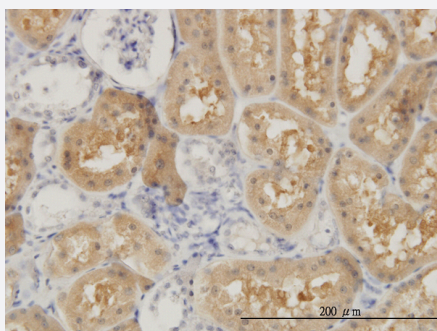


Western Blot (Transfected lysate)

Western Blot analysis of OCRL expression in transfected 293T cell line by OCRL monoclonal antibody (M02), clone 4A6.

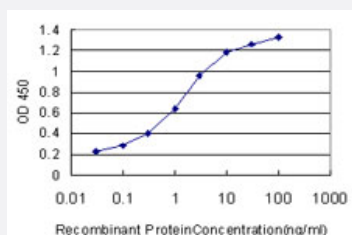
Lane 1: OCRL transfected lysate(103.2 KDa).

Lane 2: Non-transfected lysate.



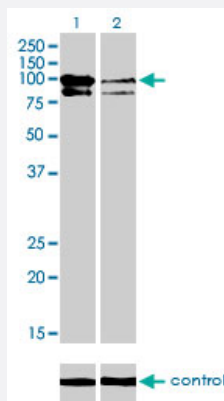
Immunohistochemistry (Formalin/PFA-fixed paraffin-embedded sections)

Immunoperoxidase of monoclonal antibody to OCRL on formalin-fixed paraffin-embedded human kidney. [antibody concentration 3 ug/ml]



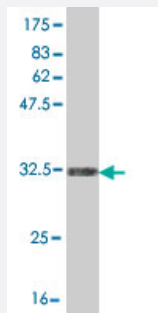
Sandwich ELISA (Recombinant protein)

Detection limit for recombinant GST tagged OCRL is approximately 0.1ng/ml as a capture antibody.



RNAi Knockdown (Antibody validated)

Western blot analysis of OCRL over-expressed 293 cell line, cotransfected with OCRL Validated Chimera RNAi (Cat # H00004952-R01V) (Lane 2) or non-transfected control (Lane 1). Blot probed with OCRL monoclonal antibody (M02), clone 4A6 (Cat # H00004952-M02). GAPDH (36.1 kDa) used as specificity and loading control.



Western Blot detection against Immunogen (36.08 KDa) .

Specification

| | |
|--------------------------------|---|
| Product Description | Mouse monoclonal antibody raised against a partial recombinant OCRL. |
| Immunogen | OCRL (NP_000267, 146 a.a. ~ 239 a.a) partial recombinant protein with GST tag. MW of the GST tag alone is 26 KDa. |
| Sequence | SGLLG FEDNFSSMNLDDKINSQNQPTGIHREPPPPF SVNKMLPREKEASNKEQPKVTNTMRKL FVPNTQSGQREGLIKHLAKREKEYVNIQT |
| Host | Mouse |
| Reactivity | Human |
| Isotype | IgG2a Kappa |
| Quality Control Testing | Antibody Reactive Against Recombinant Protein. Western Blot detection against Immunogen (36.08 KDa) . |
| Storage Buffer | In 1x PBS, pH 7.4 |
| Storage Instruction | Store at -20°C or lower. Aliquot to avoid repeated freezing and thawing. |

Applications

- Western Blot (Cell lysate)

OCRL monoclonal antibody (M02), clone 4A6 Western Blot analysis of OCRL expression in Hela S3 NE (Cat # L013V3).

[Protocol Download](#)

- Western Blot (Transfected lysate)

Western Blot analysis of OCRL expression in transfected 293T cell line by OCRL monoclonal antibody (M02), clone 4A6.

Lane 1: OCRL transfected lysate(103.2 KDa).

Lane 2: Non-transfected lysate.

[Protocol Download](#)

- Western Blot (Recombinant protein)

[Protocol Download](#)

- Immunohistochemistry (Formalin/PFA-fixed paraffin-embedded sections)

Immunoperoxidase of monoclonal antibody to OCRL on formalin-fixed paraffin-embedded human kidney. [antibody concentration 3 ug/ml]

[Protocol Download](#)

- Sandwich ELISA (Recombinant protein)

Detection limit for recombinant GST tagged OCRL is approximately 0.1ng/ml as a capture antibody.

[Protocol Download](#)

- ELISA

- RNAi Knockdown (Antibody validated)

Western blot analysis of OCRL over-expressed 293 cell line, cotransfected with OCRL Validated Chimera RNAi (Cat # H00004952-R01V) (Lane 2) or non-transfected control (Lane 1). Blot probed with OCRL monoclonal antibody (M02), clone 4A6 (Cat # H00004952-M02). GAPDH (36.1 kDa) used as specificity and loading control.

[Protocol Download](#)

Gene Info — OCRL

Entrez GeneID

[4952](#)

| | |
|---------------------|--|
| GeneBank Accession# | NM_000276 |
| Protein Accession# | NP_000267 |
| Gene Name | OCRL |
| Gene Alias | INPP5F, LOCR, NPHL2, OCRL1 |
| Gene Description | oculocerebrorenal syndrome of Lowe |
| Omim ID | 300009 300535 309000 |
| Gene Ontology | Hyperlink |
| Gene Summary | This gene encodes a phosphatase enzyme that is involved in actin polymerization and is found in the trans-Golgi network. Mutations in this gene cause oculocerebrorenal syndrome of Lowe and also Dent disease. [provided by RefSeq] |
| Other Designations | Lowe oculocerebrorenal syndrome protein OTTHUMP00000024304 phosphatidylinositol polyphosphate 5-phosphatase |

Pathway

- [Inositol phosphate metabolism](#)
- [Metabolic pathways](#)
- [Phosphatidylinositol signaling system](#)