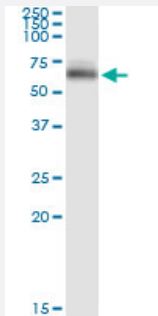


# OCLN (Human) IP-WB Antibody Pair

Catalog # H00004950-PW2

Size 1 Set

## Applications



Immunoprecipitation of OCLN transfected lysate using rabbit polyclonal anti-OCLN and Protein A Magnetic Bead ([U0007](#)), and immunoblotted with mouse purified polyclonal anti-OCLN.

## Specification

<b>Product Description</b>	This IP-WB antibody pair set comes with one antibody for immunoprecipitation and another to detect the precipitated protein in western blot.
<b>Reactivity</b>	Human
<b>Quality Control Testing</b>	Immunoprecipitation-Western Blot (IP-WB) Immunoprecipitation of OCLN transfected lysate using rabbit polyclonal anti-OCLN and Protein A Magnetic Bead ( <a href="#">U0007</a> ), and immunoblotted with mouse purified polyclonal anti-OCLN.
<b>Supplied Product</b>	Antibody pair set content: 1. Antibody pair for IP: rabbit polyclonal anti-OCLN (300 ul) 2. Antibody pair for WB: mouse purified polyclonal anti-OCLN (50 ug)
<b>Storage Instruction</b>	Store reagents of the antibody pair set at -20°C or lower. Please aliquot to avoid repeated freeze thaw cycle. Reagents should be returned to -20°C storage immediately after use.

## Applications

- Immunoprecipitation-Western Blot

[Protocol Download](#)

## Gene Info — OCLN

**Entrez GeneID** [4950](#)**Gene Name** OCLN**Gene Alias** -**Gene Description** occludin**Omim ID** [602876](#)**Gene Ontology** [Hyperlink](#)

**Gene Summary** This gene encodes an integral membrane protein which is located at tight junctions. This protein may be involved in the formation and maintenance of the tight junction. The possibility of several alternatively spliced products has been suggested but the full nature of these products has not been described. [provided by RefSeq]

**Other Designations** tight junction protein occludin TM4 minus

## Pathway

- [Cell adhesion molecules \(CAMs\)](#)
- [Leukocyte transendothelial migration](#)
- [Pathogenic Escherichia coli infection - EHEC](#)
- [Tight junction](#)