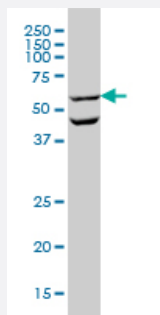


OCLN monoclonal antibody (M01), clone 1G7

Catalog # H00004950-M01

Size 100 ug

Applications



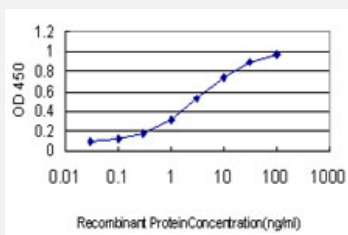
Western Blot (Cell lysate)

OCLN monoclonal antibody (M01), clone 1G7 Western Blot analysis of OCLN expression in HL-60 (Cat # L014V1).



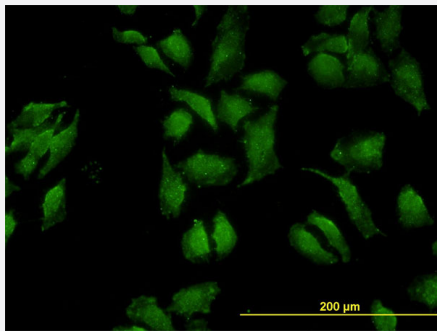
Immunoprecipitation

Immunoprecipitation of OCLN transfected lysate using anti-OCLN monoclonal antibody and Protein A Magnetic Bead, and immunoblotted with OCLN MaxPab rabbit polyclonal antibody.



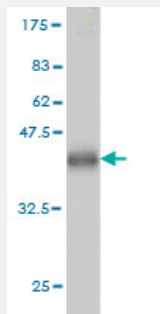
Sandwich ELISA (Recombinant protein)

Detection limit for recombinant GST tagged OCLN is approximately 0.1ng/ml as a capture antibody.



Immunofluorescence

Immunofluorescence of monoclonal antibody to OCLN on HeLa cell. [antibody concentration 10 ug/ml]



Western Blot detection against Immunogen (36.74 KDa) .

Specification

Product Description	Mouse monoclonal antibody raised against a partial recombinant OCLN.
Immunogen	OCLN (NP_002529, 423 a.a. ~ 522 a.a) partial recombinant protein with GST tag. MW of the GST tag alone is 26 KDa.
Sequence	ITSDQQRQLYKRNFD TGLQEYKSLQSELDEINKELSRDKELDDYREESEEYMAAADEYNRLKQV KGSADYKSKKNHCKQLKSKLSHIKKMVG DYDRQKT
Host	Mouse
Reactivity	Human
Isotype	IgG1 Kappa
Quality Control Testing	Antibody Reactive Against Recombinant Protein. Western Blot detection against Immunogen (36.74 KDa) .
Storage Buffer	In 1x PBS, pH 7.4
Storage Instruction	Store at -20°C or lower. Aliquot to avoid repeated freezing and thawing.

Applications

- Western Blot (Cell lysate)

OCLN monoclonal antibody (M01), clone 1G7 Western Blot analysis of OCLN expression in HL-60 (Cat # L014V1).

[Protocol Download](#)

- Western Blot (Recombinant protein)

[Protocol Download](#)

- Immunoprecipitation

Immunoprecipitation of OCLN transfected lysate using anti-OCLN monoclonal antibody and Protein A Magnetic Bead, and immunoblotted with OCLN MaxPab rabbit polyclonal antibody.

[Protocol Download](#)

- Sandwich ELISA (Recombinant protein)

Detection limit for recombinant GST tagged OCLN is approximately 0.1ng/ml as a capture antibody.

[Protocol Download](#)

- ELISA

- Immunofluorescence

Immunofluorescence of monoclonal antibody to OCLN on HeLa cell. [antibody concentration 10 ug/ml]

Gene Info — OCLN

Entrez GeneID	4950
GeneBank Accession#	NM_002538
Protein Accession#	NP_002529
Gene Name	OCLN
Gene Alias	-
Gene Description	occludin
Omim ID	602876
Gene Ontology	Hyperlink

Gene Summary

This gene encodes an integral membrane protein which is located at tight junctions. This protein may be involved in the formation and maintenance of the tight junction. The possibility of several alternatively spliced products has been suggested but the full nature of these products has not been described. [provided by RefSeq]

Other Designations

tight junction protein occludin TM4 minus

Publication Reference

- [Cutibacterium acnes regulates the epidermal barrier properties of HPV-KER human immortalized keratinocyte cultures.](#)

Beáta Szilvia Bolla, Lilla Erdei, Edit Urbán, Katalin Burián, Lajos Kemény, Kornélia Szabó.

Scientific Reports 2020 Jul; 10(1):12815.

Application: IHC-P, WB-Ce, Human, Human keratinocytes, Human skin biopsy samples

- [Development of a Perfusion Platform for Dynamic Cultivation of in vitro Skin Models.](#)

Strüver K, Friess W, Hedtrich S.

Skin Pharmacology and Physiology 2017 Jun; 30(4):180.

Application: WB-Ce, Human, Human fibroblasts, keratinocytes

- [Mouse homologues of hepatitis C virus human entry factors inhibit the entry of HCV pseudoparticles \(HCVpp\) into human hepatoma cells.](#)

Islam MJ, Amin MB, Uddin MKM, Hikosaka K, Noritake H, Wu Y, Aoto K, Miura N.

BioResearch Communications 2016 Jan; 2(1):128.

Application: WB-Tr, Mouse, NIH/3T3 cells

Pathway

- [Cell adhesion molecules \(CAMs\)](#)
- [Leukocyte transendothelial migration](#)
- [Pathogenic Escherichia coli infection - EHEC](#)
- [Tight junction](#)