

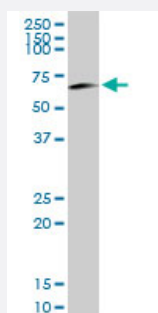
MaxPab®

OCLN purified MaxPab rabbit polyclonal antibody (D01P)

Catalog # H00004950-D01P

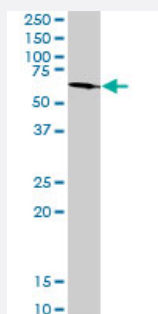
Size 100 ug

Applications



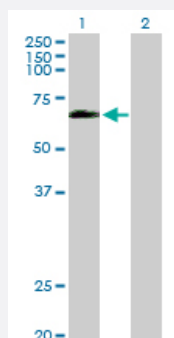
Western Blot (Tissue lysate)

OCLN MaxPab rabbit polyclonal antibody. Western Blot analysis of OCLN expression in human liver.



Western Blot (Tissue lysate)

OCLN MaxPab rabbit polyclonal antibody. Western Blot analysis of OCLN expression in mouse liver.

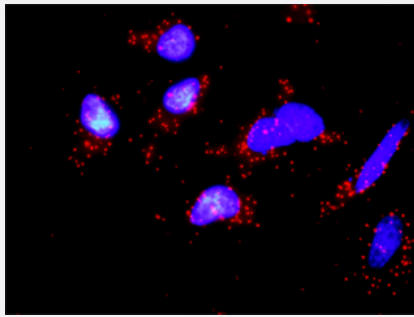


Western Blot (Transfected lysate)

Western Blot analysis of OCLN expression in transfected 293T cell line ([H00004950-T01](#)) by OCLN MaxPab polyclonal antibody.

Lane 1: OCLN transfected lysate(59.10 KDa).

Lane 2: Non-transfected lysate.



In situ Proximity Ligation Assay (Cell)

Proximity Ligation Analysis of protein-protein interactions between OCLN and CSNK1E. HeLa cells were stained with anti-OCN rabbit purified polyclonal 1:1200 and anti-CSNK1E mouse monoclonal antibody 1:50. Each red dot represents the detection of protein-protein interaction complex, and nuclei were counterstained with DAPI (blue).

Specification

| | |
|-------------------------|---|
| Product Description | Rabbit polyclonal antibody raised against a full-length human OCLN protein. |
| Immunogen | OCN (NP_002529.1, 1 a.a. ~ 522 a.a) full-length human protein. |
| Sequence | MSSRPLESPPPYRPDEFKPNHYAPSNDIYGGEMHVRPMLSQPAYSFYPEDEILHFYKWTSPPGVI RILSMLIIVMCIAIFACVASTLAWDRGYGTSLLGGSVGYPYGGSGFGSYGSGYGYGYGYGYGGYT DPRAAKGFMLAMAAFCFIAALVIFVTSVIRSEMSRTRRYLSVIIVSAILGIMVFIATIVYIMGVNPTAQS SGSLYGSQYALCNQFYTPAATGLYVDQYLYHYCVVDPQEAIIVLGFMIIVAFALIIFFAVKTRRKMD RYDKSNILWDKEHYDEQPPNVEEWVKNVSAGTQDVPSPPSDYVERVDSPMAYSSNGKVNDKR FYPESSYKSTPVPEVVQELPLTSPVDDFRQPRYSSGGNFETPSKRAPAKGRAGRSKRTEQDHYE TDYTTGGESCDELEEDWIREYPPITSDQQRQLYKRNFDTGLQEYKSLQSELDEINKELSRLDKELD DYREESEEYMAAADEYNRLKQVKGSADYKSKKNHCKQLKSKLSHIKKMVG DYDRQKT |
| Host | Rabbit |
| Reactivity | Human, Mouse |
| Quality Control Testing | Antibody reactive against mammalian transfected lysate. |
| Storage Buffer | In 1x PBS, pH 7.4 |
| Storage Instruction | Store at -20°C or lower. Aliquot to avoid repeated freezing and thawing. |

Applications

- Western Blot (Tissue lysate)

OCN MaxPab rabbit polyclonal antibody. Western Blot analysis of OCLN expression in human liver.

[Protocol Download](#)

- Western Blot (Tissue lysate)

OCLN MaxPab rabbit polyclonal antibody. Western Blot analysis of OCLN expression in mouse liver.

[Protocol Download](#)

- Western Blot (Transfected lysate)

Western Blot analysis of OCLN expression in transfected 293T cell line ([H00004950-T01](#)) by OCLN MaxPab polyclonal antibody.

Lane 1: OCLN transfected lysate(59.10 KDa).

Lane 2: Non-transfected lysate.

[Protocol Download](#)

- In situ* Proximity Ligation Assay (Cell)

Proximity Ligation Analysis of protein-protein interactions between OCLN and CSNK1E. HeLa cells were stained with anti-OCLN rabbit purified polyclonal 1:1200 and anti-CSNK1E mouse monoclonal antibody 1:50. Each red dot represents the detection of protein-protein interaction complex, and nuclei were counterstained with DAPI (blue).

Gene Info — OCLN

Entrez GeneID [4950](#)

GeneBank Accession# [NM_002538.2](#)

Protein Accession# [NP_002529.1](#)

Gene Name OCLN

Gene Alias -

Gene Description occludin

Omim ID [602876](#)

Gene Ontology [Hyperlink](#)

Gene Summary This gene encodes an integral membrane protein which is located at tight junctions. This protein may be involved in the formation and maintenance of the tight junction. The possibility of several alternatively spliced products has been suggested but the full nature of these products has not been described. [provided by RefSeq]

Other Designations tight junction protein occludin TM4 minus

Pathway

- [Cell adhesion molecules \(CAMs\)](#)
- [Leukocyte transendothelial migration](#)
- [Pathogenic Escherichia coli infection - EHEC](#)
- [Tight junction](#)