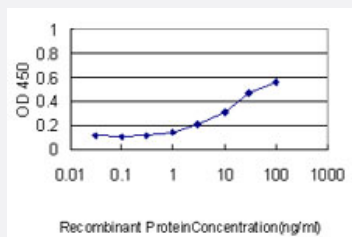


# YBX1 monoclonal antibody (M01), clone 4F12

Catalog # H00004904-M01

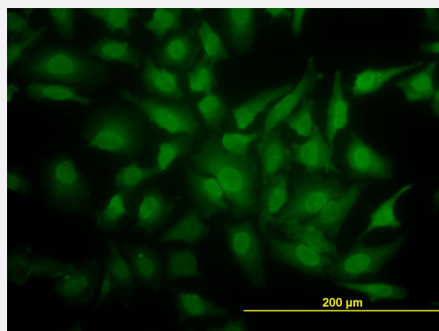
Size 100 ug

## Applications



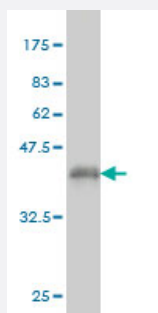
### Sandwich ELISA (Recombinant protein)

Detection limit for recombinant GST tagged YBX1 is approximately 0.3ng/ml as a capture antibody.



### Immunofluorescence

Immunofluorescence of monoclonal antibody to YBX1 on HeLa cell. [antibody concentration 20 ug/ml]



Western Blot detection against Immunogen (35.53 KDa) .

## Specification

### Product Description

Mouse monoclonal antibody raised against a partial recombinant YBX1.



Immunogen	YBX1 (NP_004550, 51 a.a. ~ 139 a.a) partial recombinant protein with GST tag. MW of the GST tag alone is 26 KDa.
Sequence	DKKVIATKVLGTVKWFNVRNGYGFNRNDTKEDVFVHQTAIKKNNPRKYLRVSGDGETVEFDVVE GEKGAEAAANVTGPGGVPVQGSKYA
Host	Mouse
Reactivity	Human
Isotype	IgG2a Kappa
Quality Control Testing	Antibody Reactive Against Recombinant Protein. Western Blot detection against Immunogen (35.53 KDa) .
Storage Buffer	In 1x PBS, pH 7.4
Storage Instruction	Store at -20°C or lower. Aliquot to avoid repeated freezing and thawing.

## Applications

- Western Blot (Recombinant protein)

[Protocol Download](#)

- Sandwich ELISA (Recombinant protein)

Detection limit for recombinant GST tagged YBX1 is approximately 0.3ng/ml as a capture antibody.

[Protocol Download](#)

- ELISA

- Immunofluorescence

Immunofluorescence of monoclonal antibody to YBX1 on HeLa cell. [antibody concentration 20 ug/ml]

## Gene Info — YBX1

Entrez GeneID	<a href="#">4904</a>
GeneBank Accession#	<a href="#">NM_004559</a>
Protein Accession#	<a href="#">NP_004550</a>
Gene Name	YBX1



Gene Alias	BP-8, CSDA2, CSDB, DBPB, MDR-NF1, MGC104858, MGC110976, MGC117250, NSEP-1, NSEP1, YB-1, YB1
Gene Description	Y box binding protein 1
Omim ID	<a href="#">154030</a>
Gene Ontology	<a href="#">Hyperlink</a>
Gene Summary	class II
Other Designations	DNA-binding protein B OTTHUMP00000008731 major histocompatibility complex, class II, Y box-binding protein II nuclease sensitive element binding protein 1