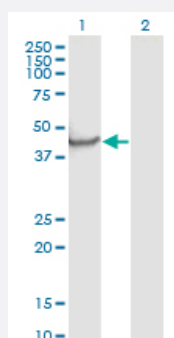


NPTX1 monoclonal antibody (M06), clone 7E6

Catalog # H00004884-M06

Size 100 ug

Applications

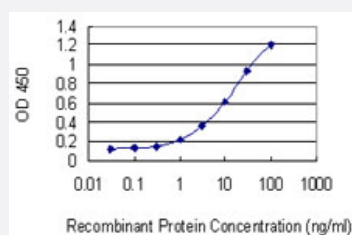


Western Blot (Transfected lysate)

Western Blot analysis of NPTX1 expression in transfected 293T cell line by NPTX1 monoclonal antibody (M06), clone 7E6.

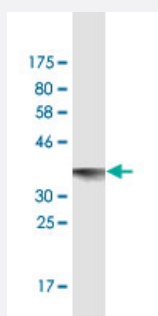
Lane 1: NPTX1 transfected lysate (Predicted MW: 47.52 KDa).

Lane 2: Non-transfected lysate.



Sandwich ELISA (Recombinant protein)

Detection limit for recombinant GST tagged NPTX1 is 0.1 ng/ml as a capture antibody.



Western Blot detection against Immunogen (36.74 KDa).

Specification

Product Description

Mouse monoclonal antibody raised against a partial recombinant NPTX1.

Immunogen	NPTX1 (NP_002513.2, 141 a.a. ~ 240 a.a) partial recombinant protein with GST tag. MW of the GST tag alone is 26 KDa.
Sequence	KTRLLENLEQYSRLNSSSQTNLSKDLLQSKIDELERQVLSRVNTLEEGKGGPRNDTEERVKIETALT SLHQRRISELEKGGQKDNRPQDKFQLTFPLRTNYMY
Host	Mouse
Reactivity	Human
Interspecies Antigen Sequence	Mouse (96); Rat (96)
Isotype	IgG2b Kappa
Quality Control Testing	Antibody Reactive Against Recombinant Protein. Western Blot detection against Immunogen (36.74 KDa) .
Storage Buffer	In 1x PBS, pH 7.4
Storage Instruction	Store at -20°C or lower. Aliquot to avoid repeated freezing and thawing.

Applications

- Western Blot (Transfected lysate)

Western Blot analysis of NPTX1 expression in transfected 293T cell line by NPTX1 monoclonal antibody (M06), clone 7E6.

Lane 1: NPTX1 transfected lysate (Predicted MW: 47.52 KDa).

Lane 2: Non-transfected lysate.

[Protocol Download](#)

- Western Blot (Recombinant protein)

[Protocol Download](#)

- Sandwich ELISA (Recombinant protein)

Detection limit for recombinant GST tagged NPTX1 is 0.1 ng/ml as a capture antibody.

[Protocol Download](#)

- ELISA

Gene Info — NPTX1

Entrez GeneID	4884
GeneBank Accession#	NM_002522
Protein Accession#	NP_002513.2
Gene Name	NPTX1
Gene Alias	DKFZp686J2446, MGC105123, NP1
Gene Description	neuronal pentraxin I
Omim ID	602367
Gene Ontology	Hyperlink
Gene Summary	NPTX1 is a member of the neuronal pentraxin gene family. Neuronal pentraxin 1 is similar to the r at NP1 gene which encodes a binding protein for the snake venom toxin taipoxin. Human NPTX1 mRNA is exclusively localized to the nervous system. [provided by RefSeq]
Other Designations	-