

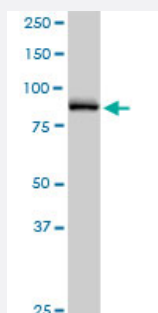
MaxPab®

NPHP1 MaxPab rabbit polyclonal antibody (D01)

Catalog # H00004867-D01

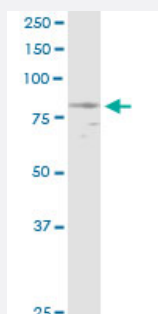
Size 100 uL

Applications



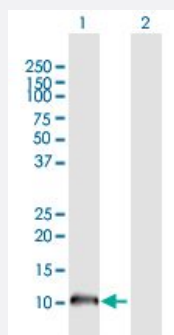
Western Blot (Tissue lysate)

NPHP1 MaxPab rabbit polyclonal antibody. Western Blot analysis of NPHP1 expression in mouse testis.



Western Blot (Cell lysate)

NPHP1 MaxPab rabbit polyclonal antibody. Western Blot analysis of NPHP1 expression in A-431.

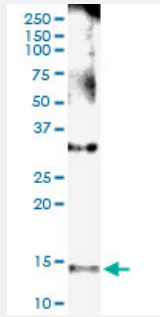


Western Blot (Transfected lysate)

Western Blot analysis of NPHP1 expression in transfected 293T cell line ([H00004867-T02](#)) by NPHP1 MaxPab polyclonal antibody.

Lane 1: NPHP1 transfected lysate(14.3 KDa).

Lane 2: Non-transfected lysate.



Immunoprecipitation

Immunoprecipitation of NPHP1 transfected lysate using anti-NPHP1 MaxPab rabbit polyclonal antibody and Protein A Magnetic Bead, and immunoblotted with NPHP1 MaxPab mouse polyclonal antibody (B01) ([H00004867-B01](#)).

Specification

Product Description	Rabbit polyclonal antibody raised against a full-length human NPHP1 protein.
Immunogen	NPHP1 (NP_997064.1, 1 a.a. ~ 121 a.a) full-length human protein.
Sequence	MLARRQRDPLQALRRRNQELKQQVDSLLSESQLKEALEPNKRQHYYQRCIQLKQAIDENKNALQKLSKADESAPVANYNQRKEEEHTLLDKLTQQLQGLAVTISRENITEYASFLPFFFLF
Host	Rabbit
Reactivity	Human, Mouse
Quality Control Testing	Antibody reactive against mammalian transfected lysate.
Storage Buffer	No additive
Storage Instruction	Store at -20°C or lower. Aliquot to avoid repeated freezing and thawing.

Applications

- Western Blot (Tissue lysate)

NPHP1 MaxPab rabbit polyclonal antibody. Western Blot analysis of NPHP1 expression in mouse testis.

[Protocol Download](#)

- Western Blot (Cell lysate)

NPHP1 MaxPab rabbit polyclonal antibody. Western Blot analysis of NPHP1 expression in A-431.

[Protocol Download](#)

- Western Blot (Transfected lysate)

Western Blot analysis of NPHP1 expression in transfected 293T cell line ([H00004867-T02](#)) by NPHP1 MaxPab polyclonal antibody.

Lane 1: NPHP1 transfected lysate(14.3 KDa).

Lane 2: Non-transfected lysate.

[Protocol Download](#)

- Immunoprecipitation

Immunoprecipitation of NPHP1 transfected lysate using anti-NPHP1 MaxPab rabbit polyclonal antibody and Protein A Magnetic Bead, and immunoblotted with NPHP1 MaxPab mouse polyclonal antibody (B01) ([H00004867-B01](#)).

[Protocol Download](#)

Gene Info — NPHP1

Entrez GeneID [4867](#)

GeneBank Accession# [NM_207181.1](#)

Protein Accession# [NP_997064.1](#)

Gene Name NPHP1

Gene Alias FLJ97602, JBTS4, NPH1, SLSN1

Gene Description nephronophthisis 1 (juvenile)

Omim ID [256100](#) [266900](#) [607100](#) [609583](#)

Gene Ontology [Hyperlink](#)

Gene Summary This gene encodes a protein with src homology domain 3 (SH3) patterns. This protein interacts with Crk-associated substrate, and it appears to function in the control of cell division, as well as in cell-cell and cell-matrix adhesion signaling, likely as part of a multifunctional complex localized in actin- and microtubule-based structures. Mutations in this gene cause familial juvenile nephronophthisis type 1, a kidney disorder involving both tubules and glomeruli. Defects in this gene are also associated with Senior-Loken syndrome type 1, also referred to as juvenile nephronophthisis with Leber amaurosis, which is characterized by kidney and eye disease, and with Joubert syndrome type 4, which is characterized by cerebellar ataxia, oculomotor apraxia, psychomotor delay and neonatal breathing abnormalities, sometimes including retinal dystrophy and renal disease. Multiple transcript variants encoding different isoforms have been found for this gene. [provided by RefSeq]

Other Designations nephrocystin-1

Disease

- [Abnormalities](#)
- [Cerebellar Ataxia](#)
- [Genetic Predisposition to Disease](#)
- [Hyperparathyroidism](#)
- [Kidney Diseases](#)
- [Mental Retardation](#)
- [Syndrome](#)