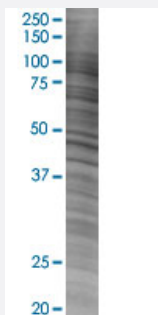


NOV 293T Cell Transient Overexpression Lysate(Denatured)

Catalog # H00004856-T02

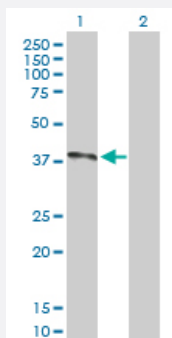
Size 100 uL

Applications



SDS-PAGE Gel

NOV transfected lysate.



Western Blot

Lane 1: NOV transfected lysate (39.20 KDa)

Lane 2: Non-transfected lysate.

Specification

Transfected Cell Line	293T
Plasmid	pCMV-NOV full-length
Host	Human
Theoretical MW (kDa)	39.2
Quality Control Testing	<p>Transient overexpression cell lysate was tested with Anti-NOV antibody (H00004856-D01P) by Western Blots.</p> <p>SDS-PAGE Gel</p> <p>NOV transfected lysate.</p> <p>Western Blot</p> <p>Lane 1: NOV transfected lysate (39.20 KDa)</p> <p>Lane 2: Non-transfected lysate.</p>

Storage Buffer

1X Sample Buffer (50 mM Tris-HCl, 2% SDS, 10% glycerol, 300 mM 2-mercaptoethanol, 0.01% Bromophenol blue)

Storage Instruction

Store at -80°C. Aliquot to avoid repeated freezing and thawing.

Applications

- Western Blot

Gene Info — NOV

Entrez GeneID[4856](#)**GeneBank Accession#**[BC015028.1](#)**Protein Accession#**[AAH15028.1](#)**Gene Name**

NOV

Gene Alias

CCN3, IGFBP9

Gene Description

nephroblastoma overexpressed gene

Omim ID[164958](#)**Gene Ontology**[Hyperlink](#)**Gene Summary**

The protein encoded by this gene is a small secreted cysteine-rich protein and a member of the CCN family of regulatory proteins. CCN family proteins associate with the extracellular matrix and play an important role in cardiovascular and skeletal development, fibrosis and cancer development . [provided by RefSeq]

Other Designations

nephroblastoma overexpressed