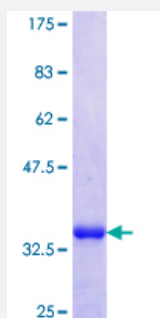


# NOV (Human) Recombinant Protein (Q01)

Catalog # H00004856-Q01

Size 25 ug, 10 ug

## Applications



## Specification

|                                |  |
|--------------------------------|--|
| <b>Product Description</b>     | Human NOV partial ORF ( NP_002505.1, 32 a.a. - 131 a.a.) recombinant protein with GST-tag at N-terminal. |
| <b>Sequence</b>                | TQRCPPQCPGRCPATPPTCAPGVRAVLDCSCCLVCARQRGESCSDLEPCDESSGLYCDRSA<br>DPSNQTGICTAVEGDNCVFDGVIYRSGEKFQPSCKFQC  |
| <b>Host</b>                    | Wheat Germ (in vitro)  |
| <b>Theoretical MW (kDa)</b>    | 36.63  |
| <b>Preparation Method</b>      | <a href="#">in vitro wheat germ expression system</a>  |
| <b>Purification</b>            | Glutathione Sepharose 4 Fast Flow  |
| <b>Quality Control Testing</b> | 12.5% SDS-PAGE Stained with Coomassie Blue.  |
| <b>Storage Buffer</b>          | 50 mM Tris-HCl, 10 mM reduced Glutathione, pH=8.0 in the elution buffer.                                 |
| <b>Storage Instruction</b>     | Store at -80°C. Aliquot to avoid repeated freezing and thawing.  |
| <b>Note</b>                    | Best use within three months from the date of receipt of this protein.                                   |

## Applications

- Enzyme-linked Immunoabsorbent Assay
- Western Blot (Recombinant protein)
- Antibody Production
- Protein Array

## Gene Info — NOV

**Entrez GeneID** [4856](#)

**GeneBank Accession#** [NM\\_002514](#)

**Protein Accession#** [NP\\_002505.1](#)

**Gene Name** NOV

**Gene Alias** CCN3, IGFBP9

**Gene Description** nephroblastoma overexpressed gene

**Omim ID** [164958](#)

**Gene Ontology** [Hyperlink](#)

**Gene Summary** The protein encoded by this gene is a small secreted cysteine-rich protein and a member of the CCN family of regulatory proteins. CCN family proteins associate with the extracellular matrix and play an important role in cardiovascular and skeletal development, fibrosis and cancer development . [provided by RefSeq]

**Other Designations** nephroblastoma overexpressed