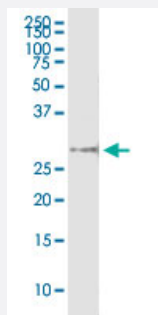


# NOV (Human) IP-WB Antibody Pair

Catalog # H00004856-PW3

Size 1 Set

## Applications



Immunoprecipitation of NOV transfected lysate using rabbit polyclonal anti-NOV and Protein A Magnetic Bead ([U0007](#)), and immunoblotted with mouse purified polyclonal anti-NOV.

## Specification

<b>Product Description</b>	This IP-WB antibody pair set comes with one antibody for immunoprecipitation and another to detect the precipitated protein in western blot.
<b>Reactivity</b>	Human
<b>Quality Control Testing</b>	Immunoprecipitation-Western Blot (IP-WB) Immunoprecipitation of NOV transfected lysate using rabbit polyclonal anti-NOV and Protein A Magnetic Bead ( <a href="#">U0007</a> ), and immunoblotted with mouse purified polyclonal anti-NOV.
<b>Supplied Product</b>	Antibody pair set content: 1. Antibody pair for IP: rabbit polyclonal anti-NOV (300 ul) 2. Antibody pair for WB: mouse purified polyclonal anti-NOV (50 ug)
<b>Storage Instruction</b>	Store reagents of the antibody pair set at -20°C or lower. Please aliquot to avoid repeated freeze thaw cycle. Reagents should be returned to -20°C storage immediately after use.

## Applications

- Immunoprecipitation-Western Blot

[Protocol Download](#)

## Gene Info — NOV

Entrez GeneID	<a href="#">4856</a>
Gene Name	NOV
Gene Alias	CCN3, IGFBP9
Gene Description	nephroblastoma overexpressed gene
Omim ID	<a href="#">164958</a>
Gene Ontology	<a href="#">Hyperlink</a>
Gene Summary	<p>The protein encoded by this gene is a small secreted cysteine-rich protein and a member of the CCN family of regulatory proteins. CCN family proteins associate with the extracellular matrix and play an important role in cardiovascular and skeletal development, fibrosis and cancer development . [provided by RefSeq]</p>
Other Designations	nephroblastoma overexpressed