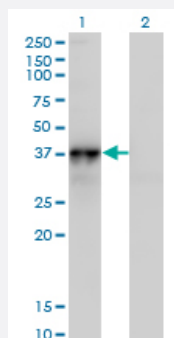


# NOV monoclonal antibody (M01), clone 3C2

Catalog # H00004856-M01

Size 100 ug

## Applications

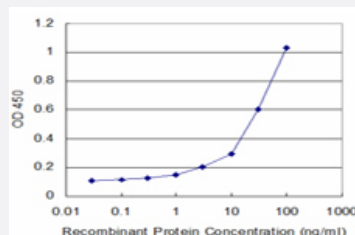


### Western Blot (Transfected lysate)

Western Blot analysis of NOV expression in transfected 293T cell line by NOV monoclonal antibody (M01), clone 3C2.

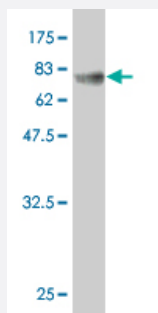
Lane 1: NOV transfected lysate (39.2 KDa).

Lane 2: Non-transfected lysate.



### Sandwich ELISA (Recombinant protein)

Detection limit for recombinant GST tagged NOV is approximately 1 ng/ml as a capture antibody.



Western Blot detection against Immunogen (65.01 KDa) .

## Specification

### Product Description

Mouse monoclonal antibody raised against a full-length recombinant NOV.

<b>Immunogen</b>	NOV (AAH15028, 1 a.a. ~ 357 a.a) full-length recombinant protein with GST tag. MW of the GST tag alone is 26 KDa.
<b>Sequence</b>	MQSVQSTSFCLRKQCLCLTFLLHLLGQVAATQRCPPQCPGRCPATPPTCAPGVRAVLGDCSC CLVCARQRGESCDLEPCDEGSLYCDRSADPSKQTGICTAVEGDNCVFDGVIYRSGEKFQPS CKFQCTCRDGGQIGCVPRCQLDVLLPEPNCPAPRKVEVPGECCCKWICGPDEEDSLGGLTLAAY RPEATLGVEVSDSSVNCIEQTTEWTACSKSCGMGFSTRVTNRNRQCEMLKQTRLCMVRPCEQE PEQPTDKKGKKCLRTKKSLKAIHLQFKNCTSLHTYKPRFCGVCSDGRCCTPHNTKTIQAEFQCSP GQIVKKPVMVIGTCTCHTNCPKNNEAFLQELELKTRGKM
<b>Host</b>	Mouse
<b>Reactivity</b>	Human
<b>Isotype</b>	IgG2a Kappa
<b>Quality Control Testing</b>	Antibody Reactive Against Recombinant Protein. Western Blot detection against Immunogen (65.01 KDa) .
<b>Storage Buffer</b>	In 1x PBS, pH 7.4
<b>Storage Instruction</b>	Store at -20°C or lower. Aliquot to avoid repeated freezing and thawing.

## Applications

- Western Blot (Transfected lysate)

Western Blot analysis of NOV expression in transfected 293T cell line by NOV monoclonal antibody (M01), clone 3C2.

Lane 1: NOV transfected lysate(39.2 KDa).

Lane 2: Non-transfected lysate.

[Protocol Download](#)

- Western Blot (Recombinant protein)

[Protocol Download](#)

- Sandwich ELISA (Recombinant protein)

Detection limit for recombinant GST tagged NOV is approximately 1ng/ml as a capture antibody.

[Protocol Download](#)

- ELISA

## Gene Info — NOV

Entrez GeneID	<a href="#">4856</a>
GeneBank Accession#	<a href="#">BC015028</a>
Protein Accession#	<a href="#">AAH15028</a>
Gene Name	NOV
Gene Alias	CCN3, IGFBP9
Gene Description	nephroblastoma overexpressed gene
Omim ID	<a href="#">164958</a>
Gene Ontology	<a href="#">Hyperlink</a>
Gene Summary	The protein encoded by this gene is a small secreted cysteine-rich protein and a member of the CCN family of regulatory proteins. CCN family proteins associate with the extracellular matrix and play an important role in cardiovascular and skeletal development, fibrosis and cancer development . [provided by RefSeq]
Other Designations	nephroblastoma overexpressed