

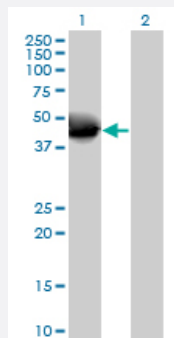
MaxPab®

NOV purified MaxPab mouse polyclonal antibody (B01P)

Catalog # H00004856-B01P

Size 50 ug

Applications



Western Blot (Transfected lysate)

Western Blot analysis of NOV expression in transfected 293T cell line ([H00004856-T01](#)) by NOV MaxPab polyclonal antibody.

Lane 1: NOV transfected lysate(39.27 KDa).

Lane 2: Non-transfected lysate.

Specification

Product Description

Mouse polyclonal antibody raised against a full-length human NOV protein.

Immunogen

NOV (AAH15028.1, 1 a.a. ~ 357 a.a) full-length human protein.

Sequence

MQSVQSTSFCLRKQCLCLTFLLHLLGQVAATQRCPPQCPGRCPATPPTCAPGVRAVLDCSC
CLVCARQRGESCDLEPCDESSGLYCDRSADPSKQTGICTAVEGDNCVFDGVIYRSGEKFQPS
CKFQCTCRDGGQIGCVPRCQLDVLLPEPNCPAPRKVEVPGECCCKWICGPDEEDSLGGLTLAAY
RPEATLGVEVSDSSVNCIEQTTEWTACSKSCGMGFSTRVTNRNRQCEMLKQTRLCMVRPCEQE
PEQPTDKKGKKCLRTKKSLKAIHLQFKNCTSLHTYKPRFCGVCSDGRCCTPHNTKTQAEFQCSP
GQVKKPVMVIGTCTCHTNCPKNNEAFLQELELKTTRGKM

Host

Mouse

Reactivity

Human

Quality Control Testing

Antibody reactive against mammalian transfected lysate.

Storage Buffer

In 1x PBS, pH 7.4

Storage Instruction

Store at -20°C or lower. Aliquot to avoid repeated freezing and thawing.

Applications

- Western Blot (Transfected lysate)

Western Blot analysis of NOV expression in transfected 293T cell line ([H00004856-T01](#)) by NOV MaxPab polyclonal antibody.

Lane 1: NOV transfected lysate(39.27 KDa).

Lane 2: Non-transfected lysate.

[Protocol Download](#)

Gene Info — NOV

Entrez GeneID	4856
---------------	----------------------

GeneBank Accession#	BC015028.1
---------------------	----------------------------

Protein Accession#	AAH15028.1
--------------------	----------------------------

Gene Name	NOV
-----------	-----

Gene Alias	CCN3, IGFBP9
------------	--------------

Gene Description	nephroblastoma overexpressed gene
------------------	-----------------------------------

Omim ID	164958
---------	------------------------

Gene Ontology	Hyperlink
---------------	---------------------------

Gene Summary	The protein encoded by this gene is a small secreted cysteine-rich protein and a member of the CCN family of regulatory proteins. CCN family proteins associate with the extracellular matrix and play an important role in cardiovascular and skeletal development, fibrosis and cancer development . [provided by RefSeq]
--------------	---

Other Designations	nephroblastoma overexpressed
--------------------	------------------------------