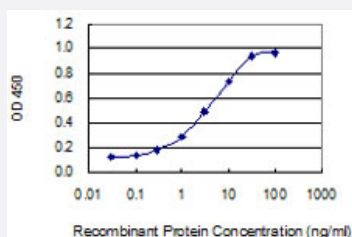


NME4 monoclonal antibody (M02), clone 4B6

Catalog # H00004833-M02

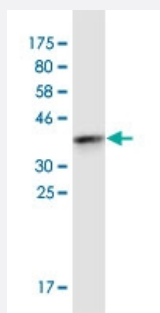
Size 100 ug

Applications



Sandwich ELISA (Recombinant protein)

Detection limit for recombinant GST tagged NME4 is 0.1 ng/ml as a capture antibody.



Western Blot detection against Immunogen (37.73 KDa) .

Specification

Product Description	Mouse monoclonal antibody raised against a partial recombinant NME4.
Immunogen	NME4 (NP_005000.1, 99 a.a. ~ 187 a.a) partial recombinant protein with GST-pstS1 tag.
Sequence	RYMSSGPVVAMVWEGYNVVRASRAMIGHTDSAEAAPGTIRGDFSVHISRNVIHASDSVEGAQREI QLWFQSSELVSWADGGQHSSIHPA
Host	Mouse
Reactivity	Human
Interspecies Antigen Sequence	Mouse (88); Rat (88)

Isotype	IgG2b Kappa
Quality Control Testing	Antibody Reactive Against Recombinant Protein. Western Blot detection against Immunogen (37.73 KDa) .
Storage Buffer	In 1x PBS, pH 7.4
Storage Instruction	Store at -20°C or lower. Aliquot to avoid repeated freezing and thawing.

Applications

- Western Blot (Recombinant protein)

[Protocol Download](#)

- Sandwich ELISA (Recombinant protein)

Detection limit for recombinant GST tagged NME4 is 0.1 ng/ml as a capture antibody.

[Protocol Download](#)

- ELISA

Gene Info — NME4

Entrez GeneID	4833
GeneBank Accession#	NM_005009.2
Protein Accession#	NP_005000.1
Gene Name	NME4
Gene Alias	NDPK-D, NM23H4, nm23-H4
Gene Description	non-metastatic cells 4, protein expressed in
Omim ID	601818
Gene Ontology	Hyperlink
Gene Summary	The nucleoside diphosphate (NDP) kinases (EC 2.7.4.6) are ubiquitous enzymes that catalyze transfer of gamma-phosphates, via a phosphohistidine intermediate, between nucleoside and dioxynucleoside tri- and diphosphates. The enzymes are products of the nm23 gene family, which includes NME4 (Milon et al., 1997 [PubMed 9099850]).[supplied by OMIM]

Other Designations

NDP kinase D|nucleoside-diphosphate kinase 4

Pathway

- [Metabolic pathways](#)
- [Purine metabolism](#)
- [Pyrimidine metabolism](#)