

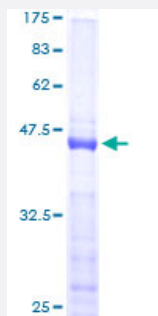
Full-Length

NHLH1 (Human) Recombinant Protein (P01)

Catalog # H00004807-P01

Size 25 ug, 10 ug

Applications



Specification

Product Description	Human NHLH1 full-length ORF (AAH13789, 1 a.a. - 133 a.a.) recombinant protein with GST-tag at N-terminal.
Sequence	MMLNSDTMELDLPPTHSETESGFSDCGGGAGPDGAGPGGPGGGQARGPEPEPGRKDLQHL SREERRRRRRATAKYRTAHATRERIRVEAFNLAFaelrKLLPTLPPDKKLSKIEILRLAICYISYLNHV LDV
Host	Wheat Germ (in vitro)
Theoretical MW (kDa)	40.37
Interspecies Antigen Sequence	Mouse (92); Rat (93)
Preparation Method	in vitro wheat germ expression system
Purification	Glutathione Sepharose 4 Fast Flow
Quality Control Testing	12.5% SDS-PAGE Stained with Coomassie Blue.
Storage Buffer	50 mM Tris-HCl, 10 mM reduced Glutathione, pH=8.0 in the elution buffer.
Storage Instruction	Store at -80°C. Aliquot to avoid repeated freezing and thawing.

Note

Best use within three months from the date of receipt of this protein.

Applications

- Enzyme-linked Immunoabsorbent Assay
- Western Blot (Recombinant protein)
- Antibody Production
- Protein Array

Gene Info — NHLH1

Entrez GeneID [4807](#)

GeneBank Accession# [BC013789](#)

Protein Accession# [AAH13789](#)

Gene Name NHLH1

Gene Alias HEN1, NSCL, NSCL1, bHLHa35

Gene Description nescient helix loop helix 1

Omim ID [162360](#)

Gene Ontology [Hyperlink](#)

Gene Summary The helix-loop-helix (HLH) proteins are a family of putative transcription factors, some of which have been shown to play an important role in growth and development of a wide variety of tissues and species. Four members of this family have been clearly implicated in tumorigenesis via their involvement in chromosomal translocations in lymphoid tumors: MYC (MIM 190080), LYL1 (MIM 151440), E2A (MIM 147141), and SCL (MIM 187040).[supplied by OMIM]

Other Designations OTTHUMP00000031860