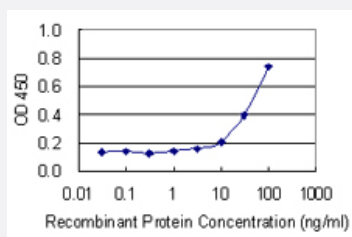


NHLH1 monoclonal antibody (M06), clone 4D7

Catalog # H00004807-M06

Size 100 ug

Applications



Sandwich ELISA (Recombinant protein)

Detection limit for recombinant GST tagged NHLH1 is 3 ng/ml as a capture antibody.

Specification

Product Description	Mouse monoclonal antibody raised against a full length recombinant NHLH1.
Immunogen	NHLH1 (AAH13789, 1 a.a. ~ 133 a.a) full-length recombinant protein with GST tag. MW of the GST tag alone is 26 KDa.
Sequence	MMLNSDTMELDLPPTHSETESGFSDCGGGAGPDGAGPGGPGGGQARGPEPEPGRKDLQHL SREERRRRRATAKYRTAHATRERIRVEAFNLAFaelRKLLPTLPPDKKLSKIEILRLAICYISYLNHV LDV
Host	Mouse
Reactivity	Human
Interspecies Antigen Sequence	Mouse (92); Rat (93)
Isotype	IgG2a Kappa
Quality Control Testing	Antibody Reactive Against Recombinant Protein.
Storage Buffer	In 1x PBS, pH 7.4
Storage Instruction	Store at -20°C or lower. Aliquot to avoid repeated freezing and thawing.

Applications

- Sandwich ELISA (Recombinant protein)

Detection limit for recombinant GST tagged NHLH1 is 3 ng/ml as a capture antibody.

[Protocol Download](#)

- ELISA

Gene Info — NHLH1

Entrez GeneID	4807
GeneBank Accession#	BC013789
Protein Accession#	AAH13789
Gene Name	NHLH1
Gene Alias	HEN1, NSCL, NSCL1, bHLHa35
Gene Description	nescient helix loop helix 1
Omim ID	162360
Gene Ontology	Hyperlink
Gene Summary	The helix-loop-helix (HLH) proteins are a family of putative transcription factors, some of which have been shown to play an important role in growth and development of a wide variety of tissues and species. Four members of this family have been clearly implicated in tumorigenesis via their involvement in chromosomal translocations in lymphoid tumors: MYC (MIM 190080), LYL1 (MIM 151440), E2A (MIM 147141), and SCL (MIM 187040).[supplied by OMIM]
Other Designations	OTTHUMP00000031860